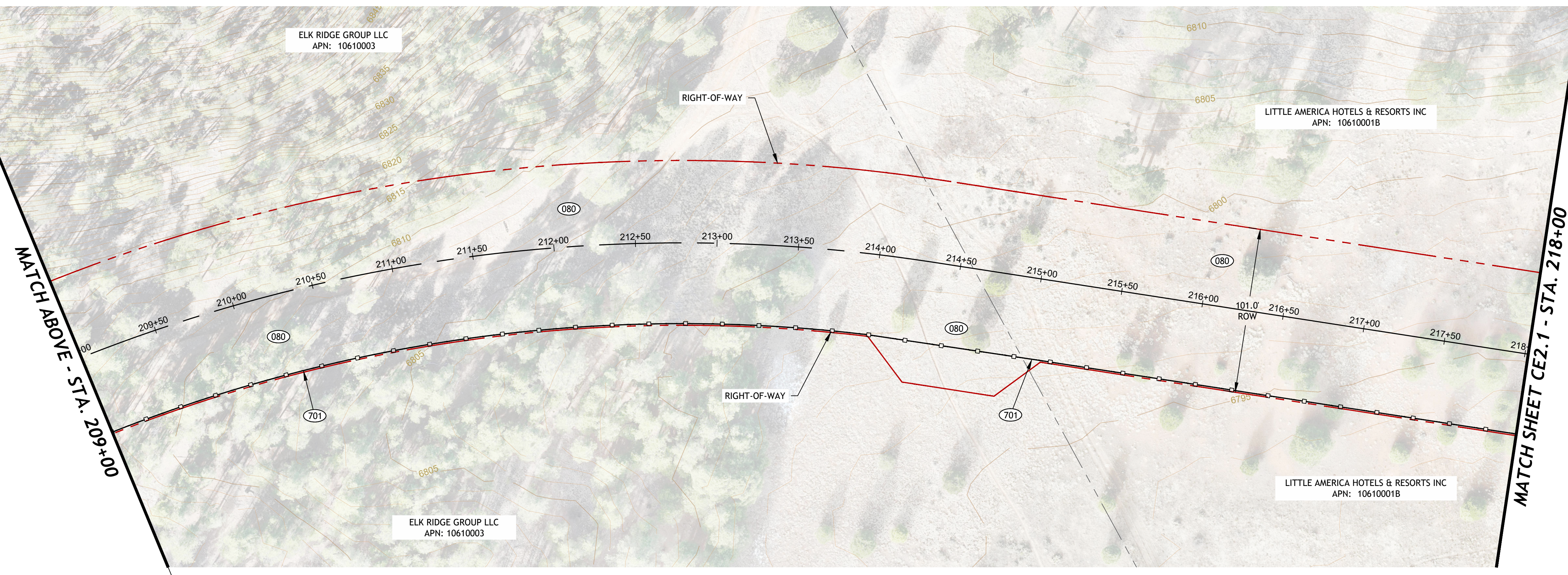


PLAN VIEW  
SCALE 1" = 40'



**CONSTRUCTION NOTES**

**REMOVALS (000)**

080 4.2 AC  
Clear & Grub, limits are Right of way.

**EROSION CONTROL (700)**

701 1,730 LF  
Synthetic wattle placed per ADOT Stormwater Quality Protection & Erosion/Sediment Control Detail ES3, Sheet CE1.3 or temporary silt fence per ADOT Stormwater Quality Protection & Erosion/Sediment Control Detail ES7, Sheet CE1.3. Provide a 20-ft gap between 200-ft lengths of silt fence.

720 1 LS  
Stabilized construction entrance/exit per ADOT Stormwater Quality Protection & Erosion/Sediment Control Detail ES11, Sheet CE1.3. Contractor to determine location.



REVISION	DESCRIPTION/DATE	DATE

110 N. Agassiz St.  
Flagstaff, AZ 86001  
(928) 774-4046

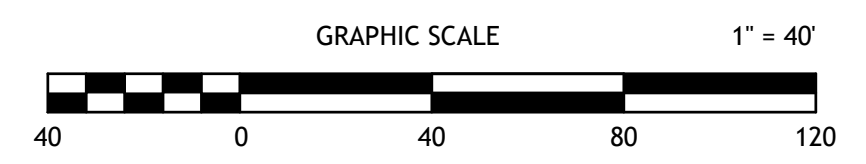


Preliminary  
Not For  
Construction

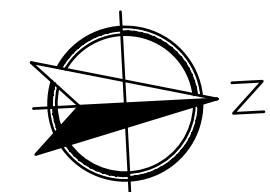
**CITY OF FLAGSTAFF  
JW POWELL EXTENSION  
CLEARING & EROSION CONTROL**

BY: DCW/SJ  
CHECKED: JOL  
JOB NO: 17COP02  
DATE: MARCH 2026

**CE2.0**







MATCH SHEET CE2.1 - STA. 235+00



**CONSTRUCTION NOTES**

**REMOVALS (000)**

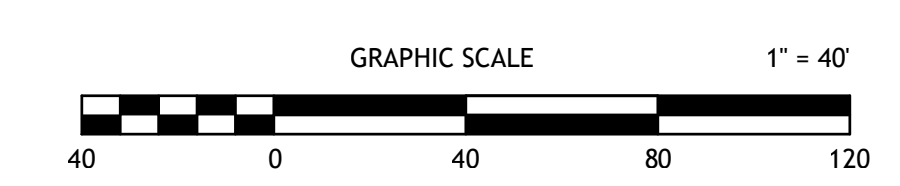
080 2.2 AC  
Clear & Grub, limits are Right of way.

**EROSION CONTROL (700)**

701 760 LF  
Synthetic wattle placed per ADOT Stormwater Quality Protection & Erosion/Sediment Control Detail E53, Sheet CE1.3 or temporary silt fence per ADOT Stormwater Quality Protection & Erosion/Sediment Control Detail E57, Sheet CE1.3. Provide a 20-ft gap between 200-ft lengths of silt fence.



REVISION	DESCRIPTION/DATE	DATE



  
**Peak**  
**ENGINEERING, INC.**  
*Connecting Place to People*

110 N. Agassiz St.  
 Flagstaff, AZ 86001  
 (928) 774-4046

Preliminary  
Not For  
Construction

**CITY OF FLAGSTAFF  
 JW POWELL EXTENSION  
 CLEARING & EROSION CONTROL**

JOB NO: 17COP02      BY: DCW/SJ      CHECKED: JOL  
 DATE: MARCH 2026

**CE2.2**

