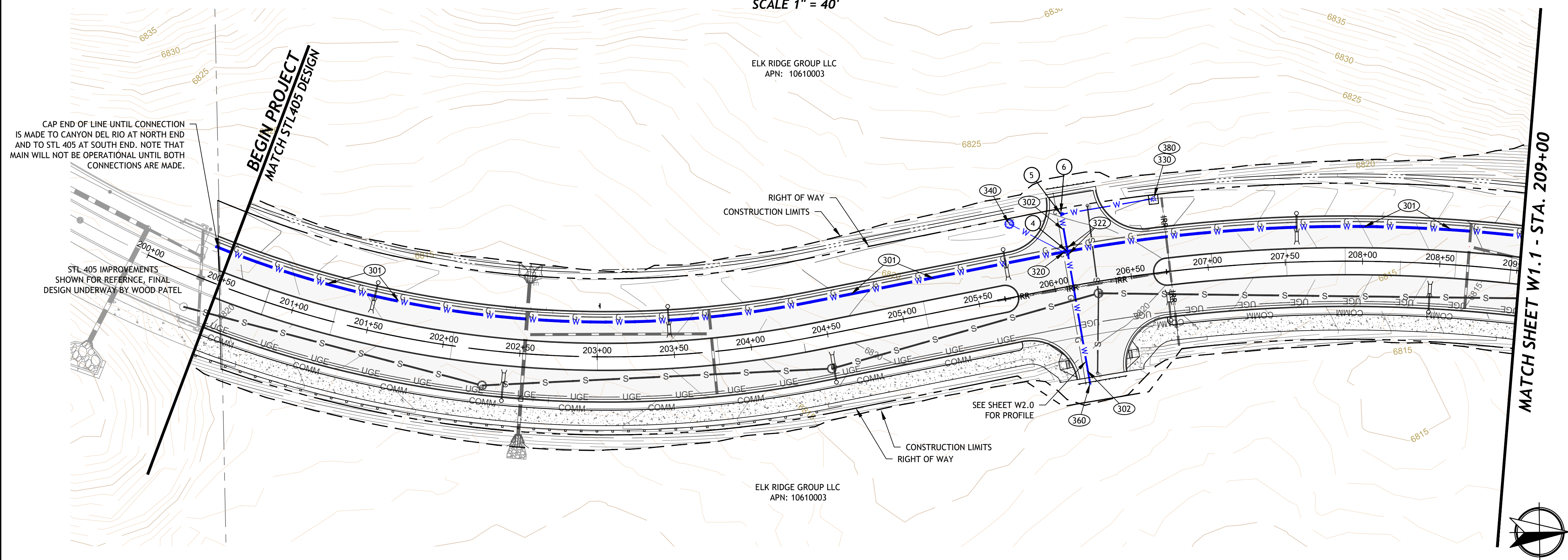
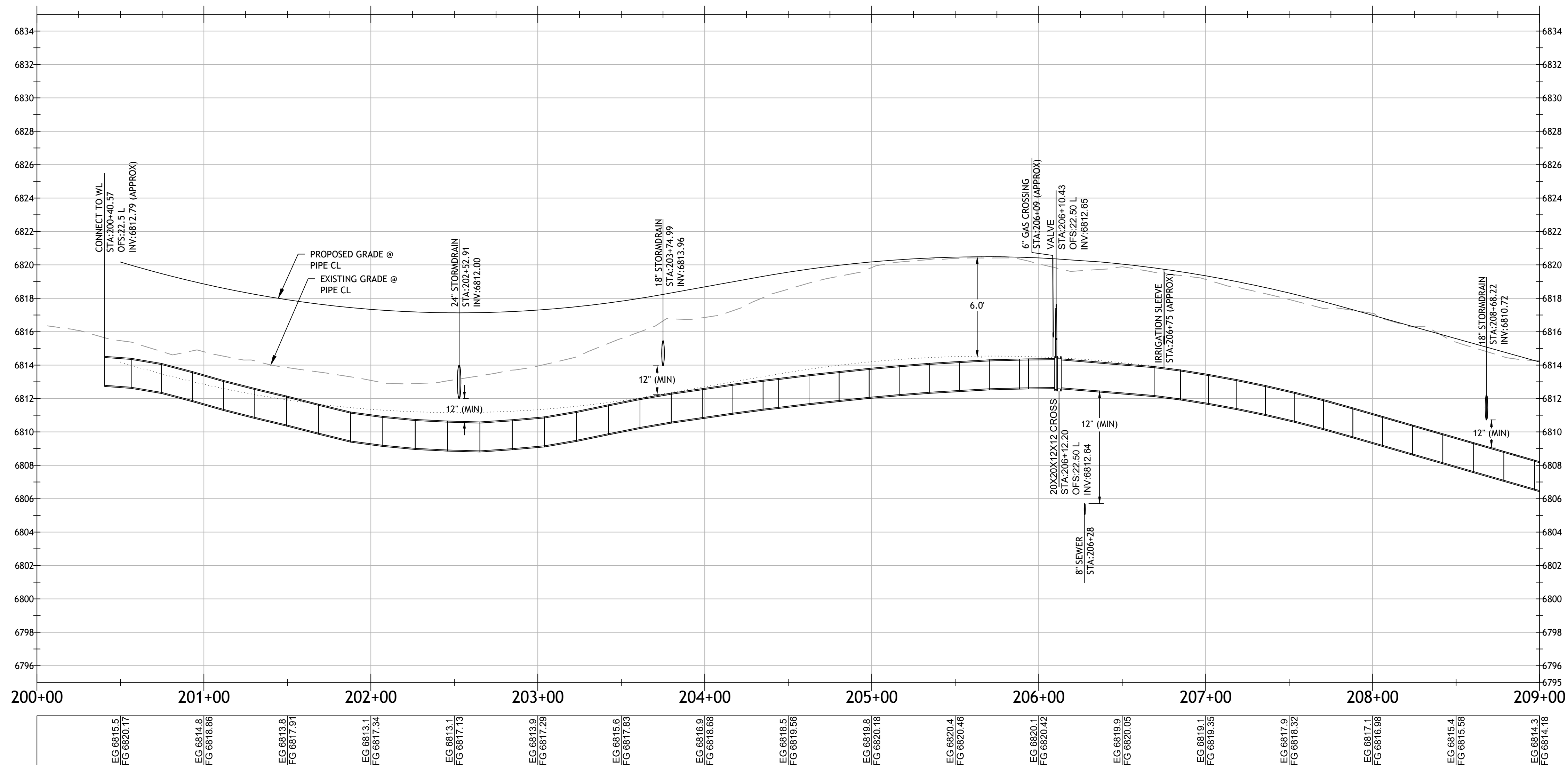


PLAN VIEW
SCALE 1" = 40'



PROFILE VIEW
HORIZ. SCALE 1" = 40'
VERT. SCALE 1" = 4'



CONSTRUCTION NOTES

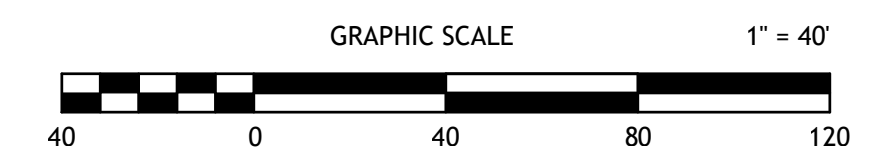
- WATER (300)**
- 301 855 LF
20" D.I.P. water main, Class 250, polyethylene encased. Trenching per Detail A, Sheet UT 3.3 and COF Engineering Detail 09-01-031. Restrain joints per MAG Std Detail 303. Blocking per MAG Standard Det. 380 and Per Table W1 on Sheet UT3.3.
- 302 115 LF
12" D.I.P. class 250 polyethylene encased. Trenching per COF Engineering Detail 09-01-031. Restrain joints per MAG Std Detail 303. Blocking per MAG Standard Det. 380 and City of Flagstaff Revision to MAG 13-21-002-0380
- 320 1 EA
20" gate valve, class 250, epoxy coated resilient seat, blocking per MAG Standard Det. 301. Ring, frame, cover and collar per COF Engineering Standard 9-03-060 and 9-03-062.
- 322 2 EA
12" gate valve, class 250, epoxy coated resilient seat, blocking per MAG Standard Det. 301. Ring, frame, cover and collar per COF Engineering Standard 9-03-060 and 9-03-062.
- 330 1 EA
Fire hydrant and assembly including valve, box and cover per COF Engineering Detail 13-03-011. Location of hydrant shall allow for 12" min. clearance between back of sidewalk and front hydrant cap.
- 340 1 EA
Combination Air Release Valve, 2", per COF Engineering Detail 09-03-100, located at the high point of the water main. Field locate vent pipe so that it is in location away from traffic.
- 360 1 EA
End of line temporary blow-off per COF Engineering Detail 9-03-053.
- 380 NPI
Tracer wire connection station per COF Engineering Detail 9-01-020 and per Detail B, Sheet UT3.3.

PIPE FITTINGS

- ① 45° BEND
- ② 22.5° BEND
- ③ 11.25° BEND
- ④ CROSS
- ⑤ TEE
- ⑥ CAP

GENERAL NOTE

Refer to detail A, Sheet UT3.3 for general utility placement and shared trench details with franchise utilities (e.g. communications, natural gas, electric, city fiber optic).



201 E. Birch Ave., Suite 3
Flagstaff, AZ 86001
(928) 774-4046



Preliminary
Not For
Construction

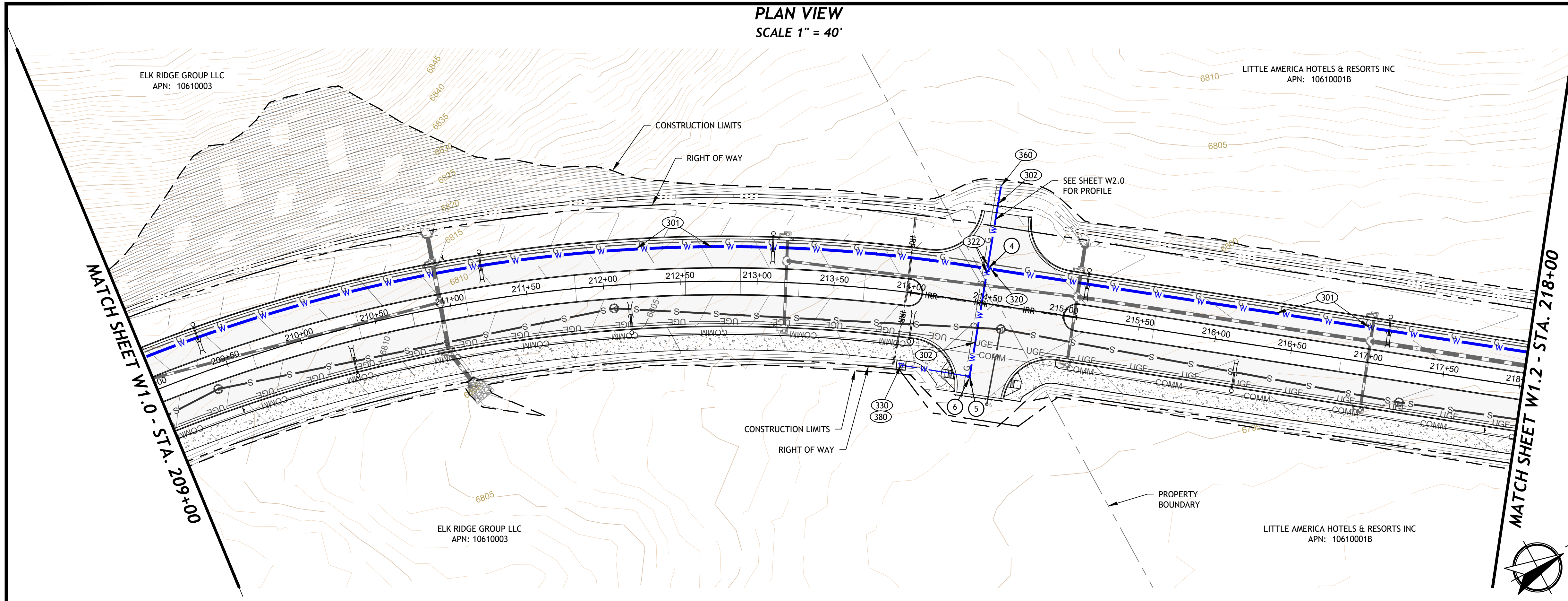
CITY OF FLAGSTAFF
JW POWELL EXTENSION
WATERLINE PLAN & PROFILE
STA: 200+00 TO 209+00

JOB NO: 17C0F02
DATE: MAY 2026

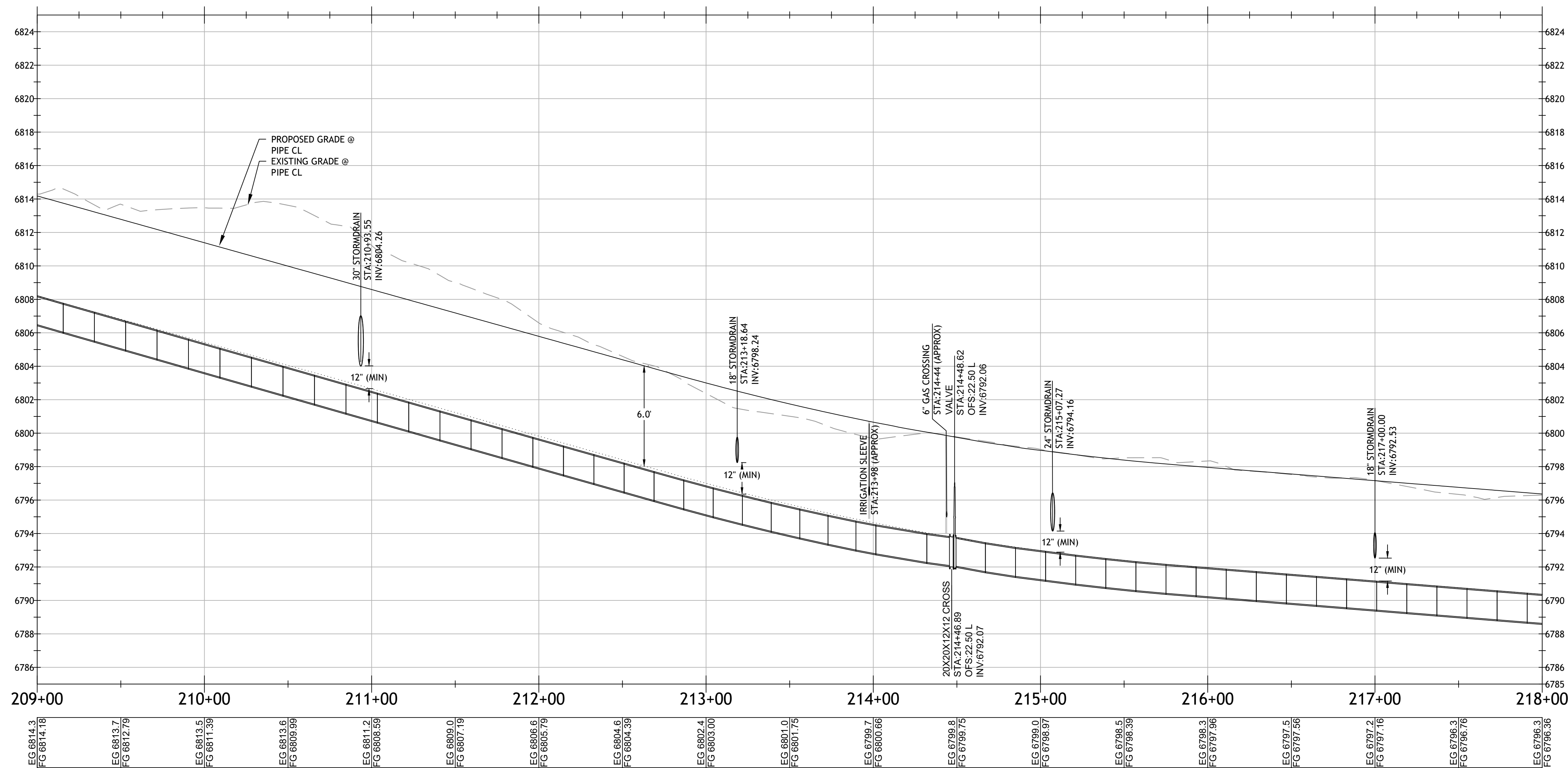
BY: DCW/LWQ
CHECKED: JOL

W1.0

PLAN VIEW
SCALE 1" = 40'



PROFILE VIEW
HORIZ. SCALE 1" = 40'
VERT. SCALE 1" = 4'



CONSTRUCTION NOTES

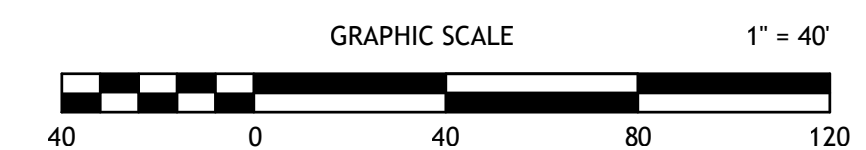
- WATER (300)**
- 301 910 LF
20" D.I.P. water main, class 250, polyethylene encased. Trenching per Detail A, Sheet UT3.3 and COF Engineering Detail 09-01-031. Restrain joints per MAG Std Detail 303. Blocking per MAG Standard Det. 380 and per Table W1 on Sheet UT3.3.
- 302 140 LF
12" D.I.P. class 250 polyethylene encased. Trenching per COF Engineering Detail 09-01-031. Restrain joints per MAG Std Detail 303. Blocking per MAG Standard Det. 380 and City of Flagstaff Revision to MAG 13-21-002-0380.
- 320 1 EA
20" gate valve, class 250, epoxy coated resilient seat, blocking per MAG Standard Det. 301. Ring, frame, cover and collar per COF Engineering Standard 9-03-060 and 9-03-062.
- 322 1 EA
12" gate valve, class 250, epoxy coated resilient seat, blocking per MAG Standard Det. 301. Ring, frame, cover and collar per COF Engineering Standard 9-03-060 and 9-03-062.
- 330 1 EA
Fire hydrant and assembly including valve, box and coer per COF Engineering Detail 13-03-011. Location of hydrant shall allow for 12" min. clearance between back of sidewalk and front hydrant cap.
- 360 1 EA
End of line temporary blow-off per COF Engineering Detail 9-03-053.
- 380 NPI
Tracer wire connection station per COF Engineering Detail 9-01-020 and per Detail B, Sheet UT3.3

PIPE FITTINGS

- ① 45° BEND
- ② 22.5° BEND
- ③ 11.25° BEND
- ④ CROSS
- ⑤ TEE
- ⑥ CAP

GENERAL NOTE

Refer to detail A, Sheet UT3.3 for general utility placement and shared trench details with franchise utilities (e.g. communications, natural gas, electric, city fiber optic).



REVISION	DESCRIPTION	DATE

201 E. Birch Ave., Suite 3
Flagstaff, AZ 86001
(928) 774-4046



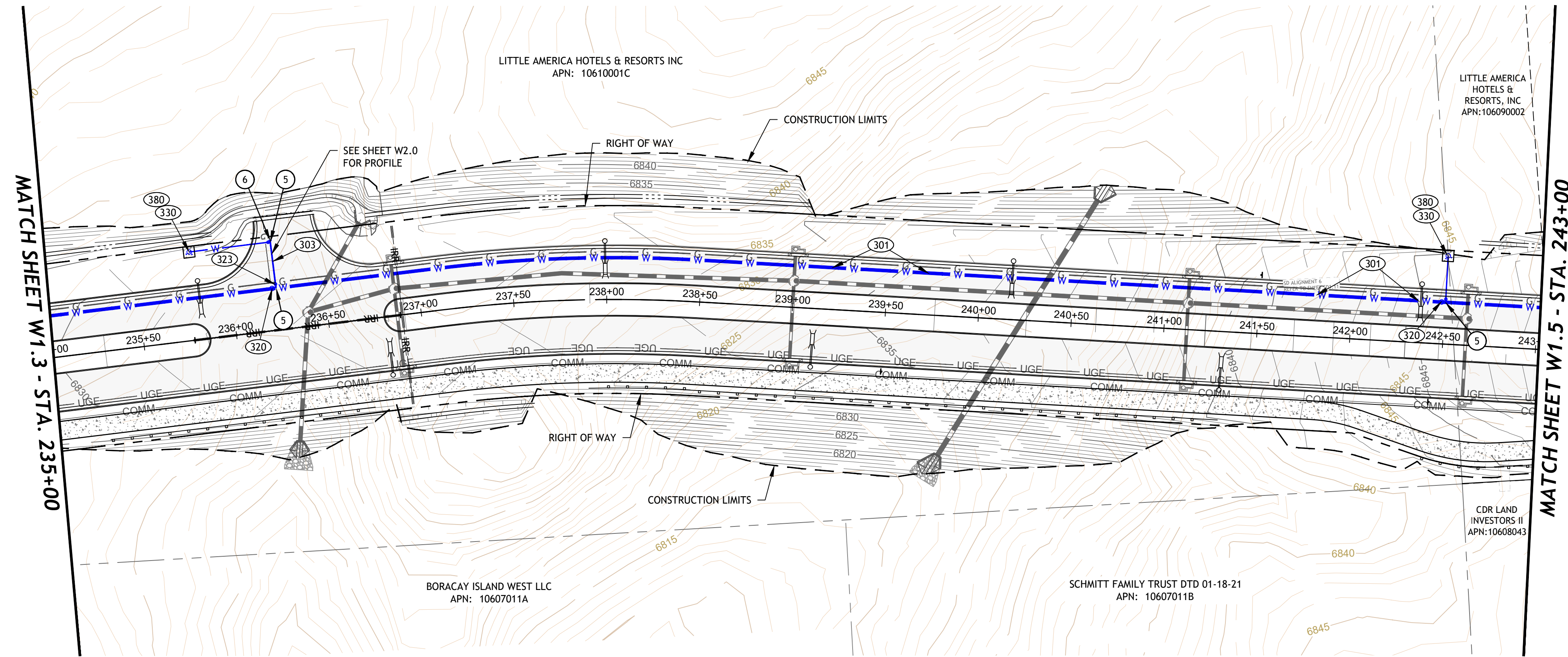
Preliminary
Not For
Construction

CITY OF FLAGSTAFF JW POWELL EXTENSION WATERLINE PLAN & PROFILE STA: 209+00 TO 218+00	JOB NO: TCF02	BY: DCW/LWQ	CHECKED: JOL
	DATE: MAY 2026		

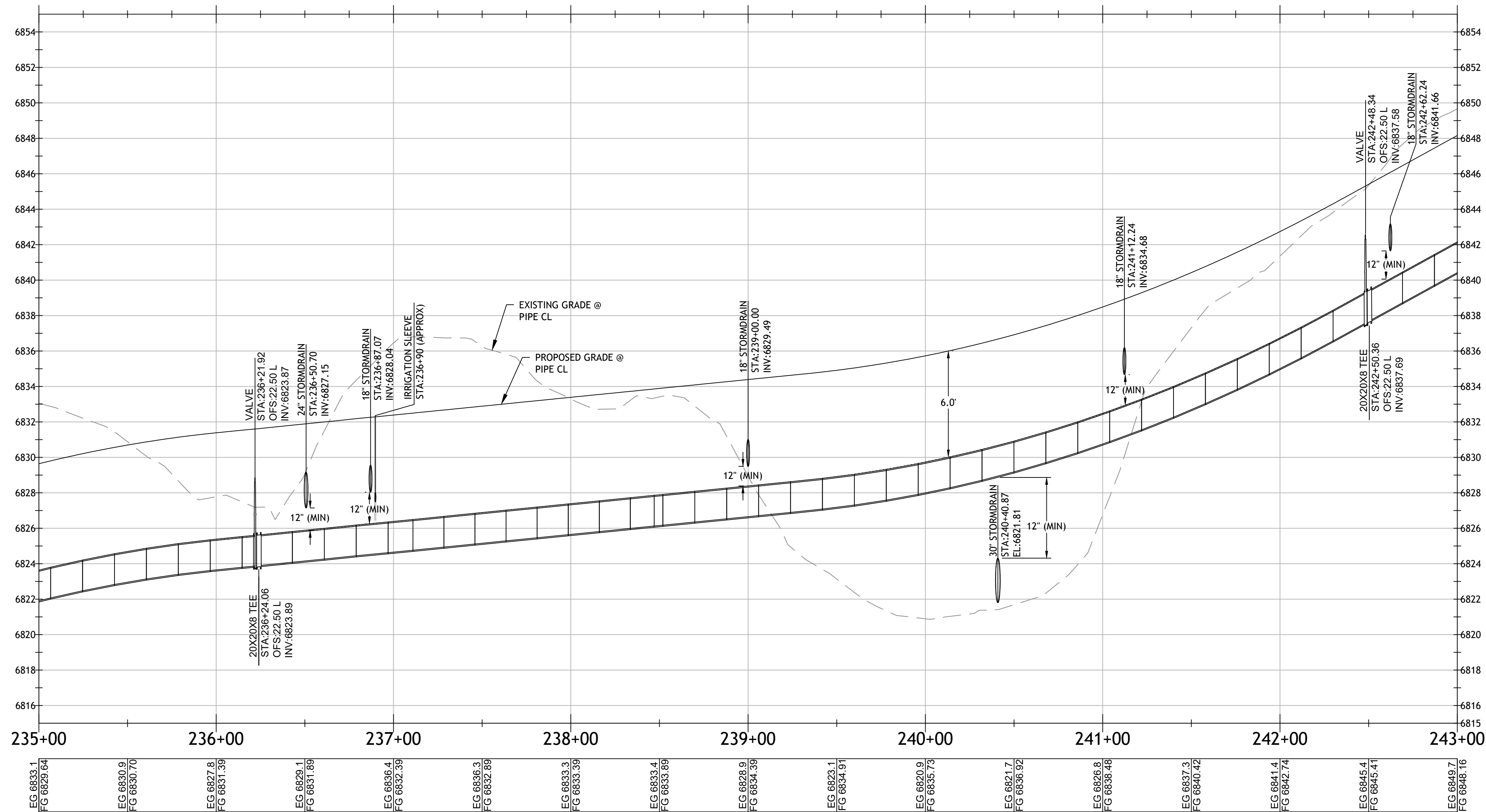
W1.1

90% DESIGN
COF PROJECT NO: 03-16010

PLAN VIEW
SCALE 1" = 40'



PROFILE VIEW
HORIZ. SCALE 1" = 40'
VERT. SCALE 1" = 4'



CONSTRUCTION NOTES

- WATER (300)**
301 805 LF
20" D.I.P. water main, Class 250, polyethylene encased. Trenching per Detail A, Sheet UT3.3 and COF Engineering Detail 09-01-031. Restrain joints per MAG Std Detail 303. Blocking per MAG Standard Det. 380 and per Table W1 on Sheet UT3.3.
- 303 26 LF
8" D.I.P. class 350 polyethylene encased. Trenching per COF Engineering Detail 09-01-031. Restrain joints per MAG Std Detail 303. Blocking per MAG Standard Det. 380 and City of Flagstaff Revision to MAG 13-21-002-0380.
- 320 2 EA
20" gate valve, class 250, epoxy coated resilient seat, blocking per MAG Standard Det. 301. Ring, frame, cover and collar per COF Engineering Standard 9-03-060 and 9-03-062.
- 323 1 EA
8" gate valve, class 250, epoxy coated resilient seat, blocking per MAG Standard Det. 301. Ring, frame, cover and collar per COF Engineering Standard 9-03-060 and 9-03-062.
- 330 2 EA
Fire hydrant and assembly including valve, box and cover per COF Engineering Detail 13-03-011. Location of hydrant shall allow for 12" min. clearance between back of sidewalk and front hydrant cap.
- 380 NPI
Tracer wire connection station per COF Engineering Detail 9-01-020 and per Detail B, Sheet UT3.3.

PIPE FITTINGS

- ① 45° BEND
- ② 22.5° BEND
- ③ 11.25° BEND
- ④ CROSS
- ⑤ TEE
- ⑥ CAP

GENERAL NOTE

Refer to Detail A, Sheet UT3.3 for general utility placement and shared trench details with franchise utilities (e.g. communications, natural gas, electric, city fiber optic).



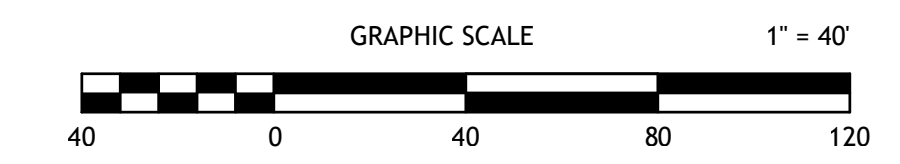
DATE	DESCRIPTION	REVISION

201 E. Birch Ave., Suite 3
Flagstaff, AZ 86001
(928) 774-4046

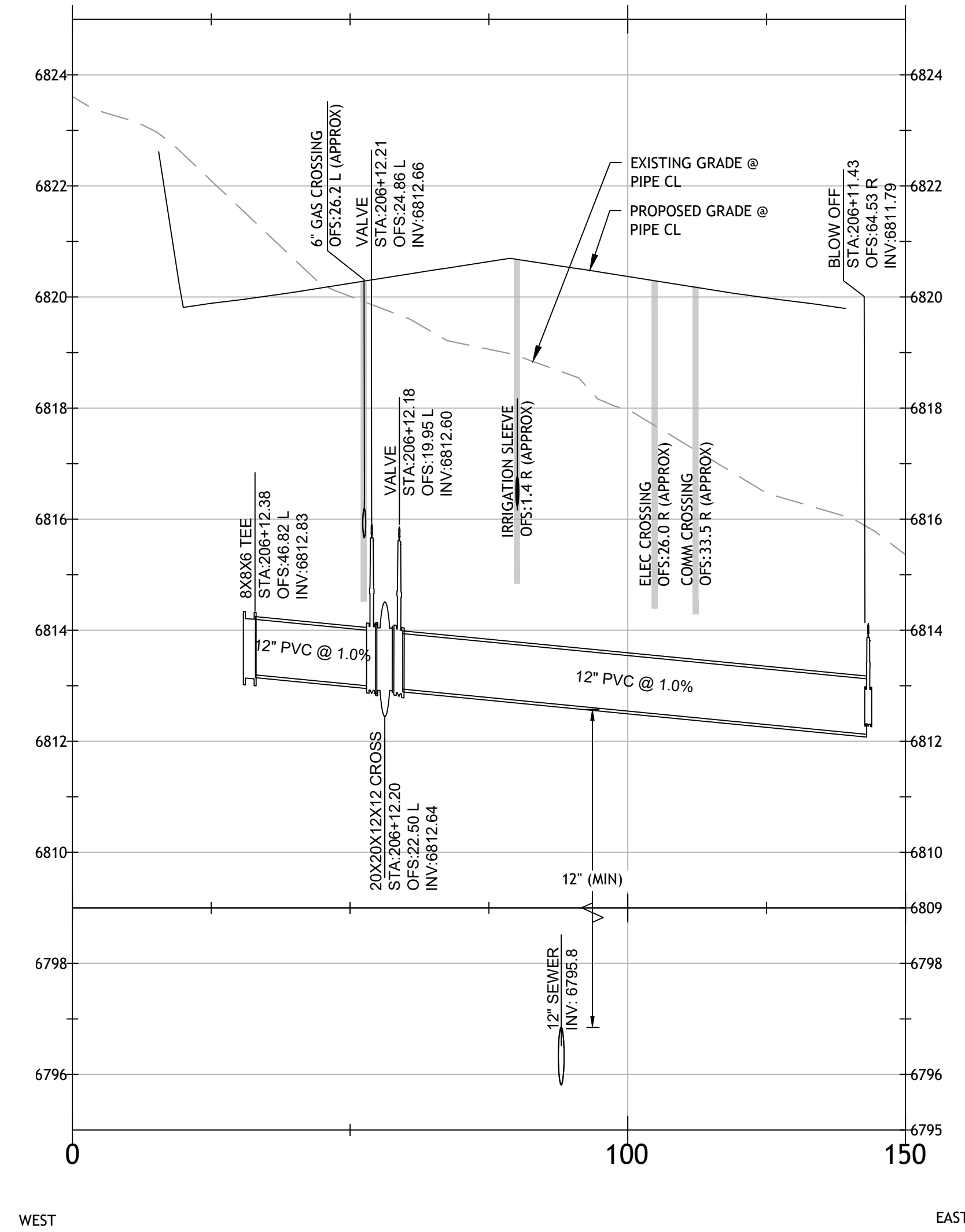


Preliminary
Not For
Construction

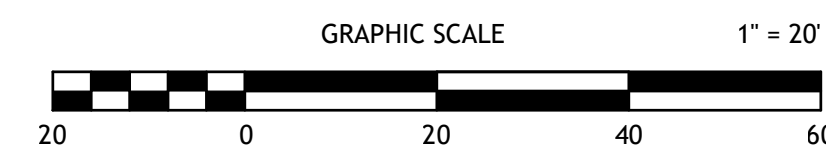
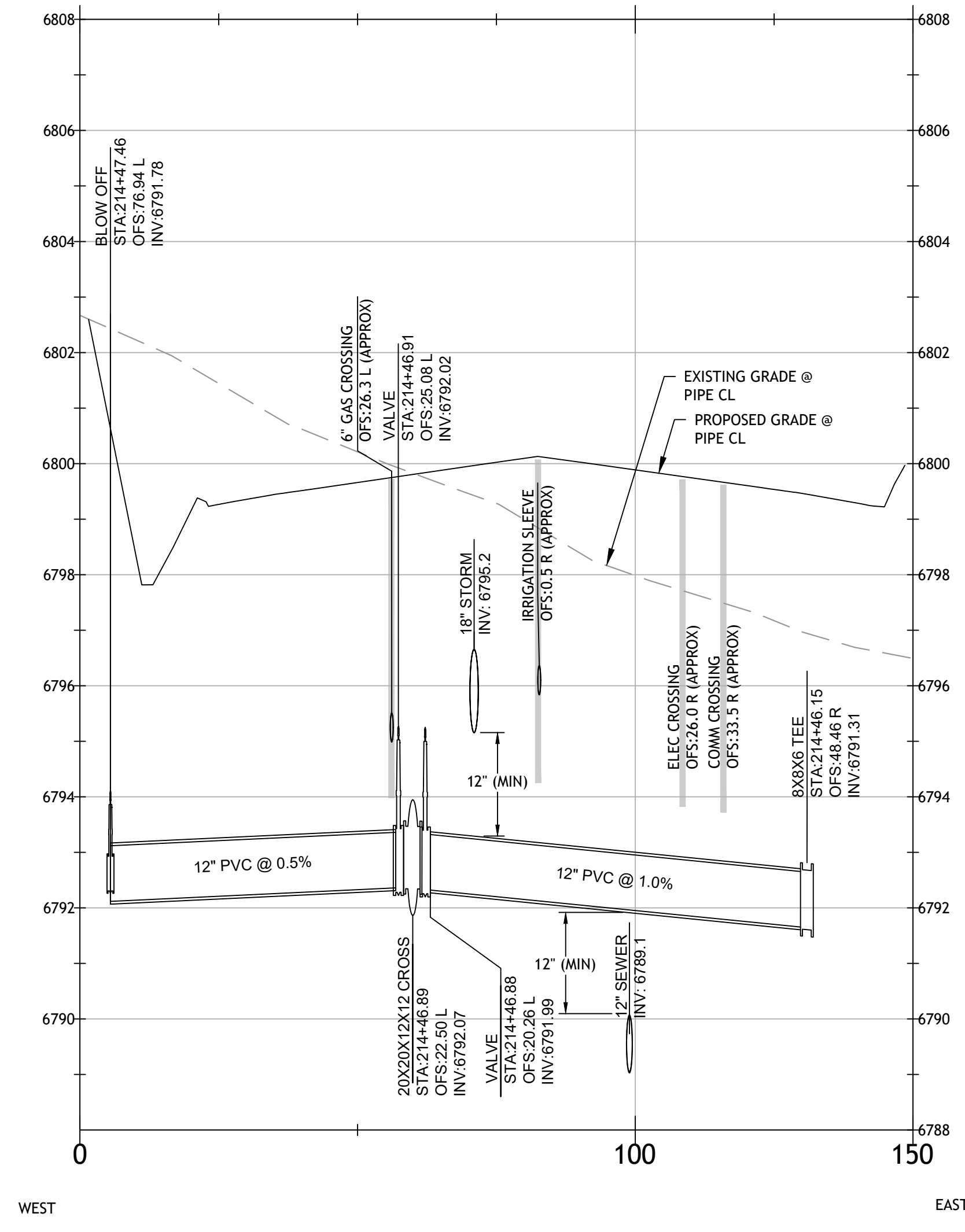
CITY OF FLAGSTAFF JW POWELL EXTENSION WATERLINE PLAN & PROFILE STA: 235+00 TO 243+00	BY: DCW/LWQ	CHECKED: JOL
	JOB NO: 17C092	DATE: MAY 2026
W1.4	90% DESIGN COF PROJECT NO: 03-16010	



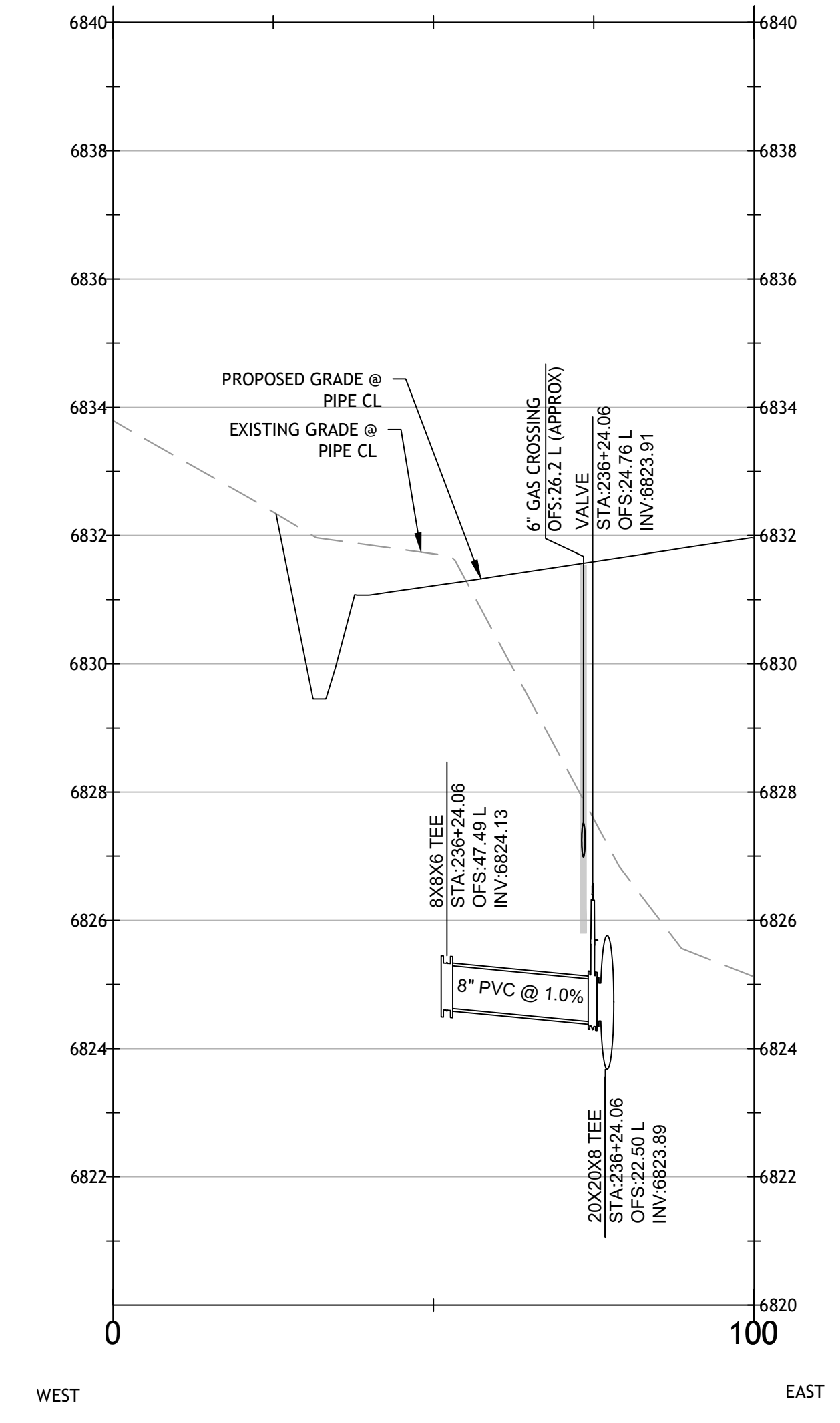
STA: 206+12 (ELK RIDGE)



STA: 214+46 (SOUTH LITTLE AMERICA)



STA: 236+24 (NORTH LITTLE AMERICA)



REVISION	DESCRIPTION	DATE

201 E. Birch Ave., Suite 3
 Flagstaff, AZ 86001
 (928) 774-4046

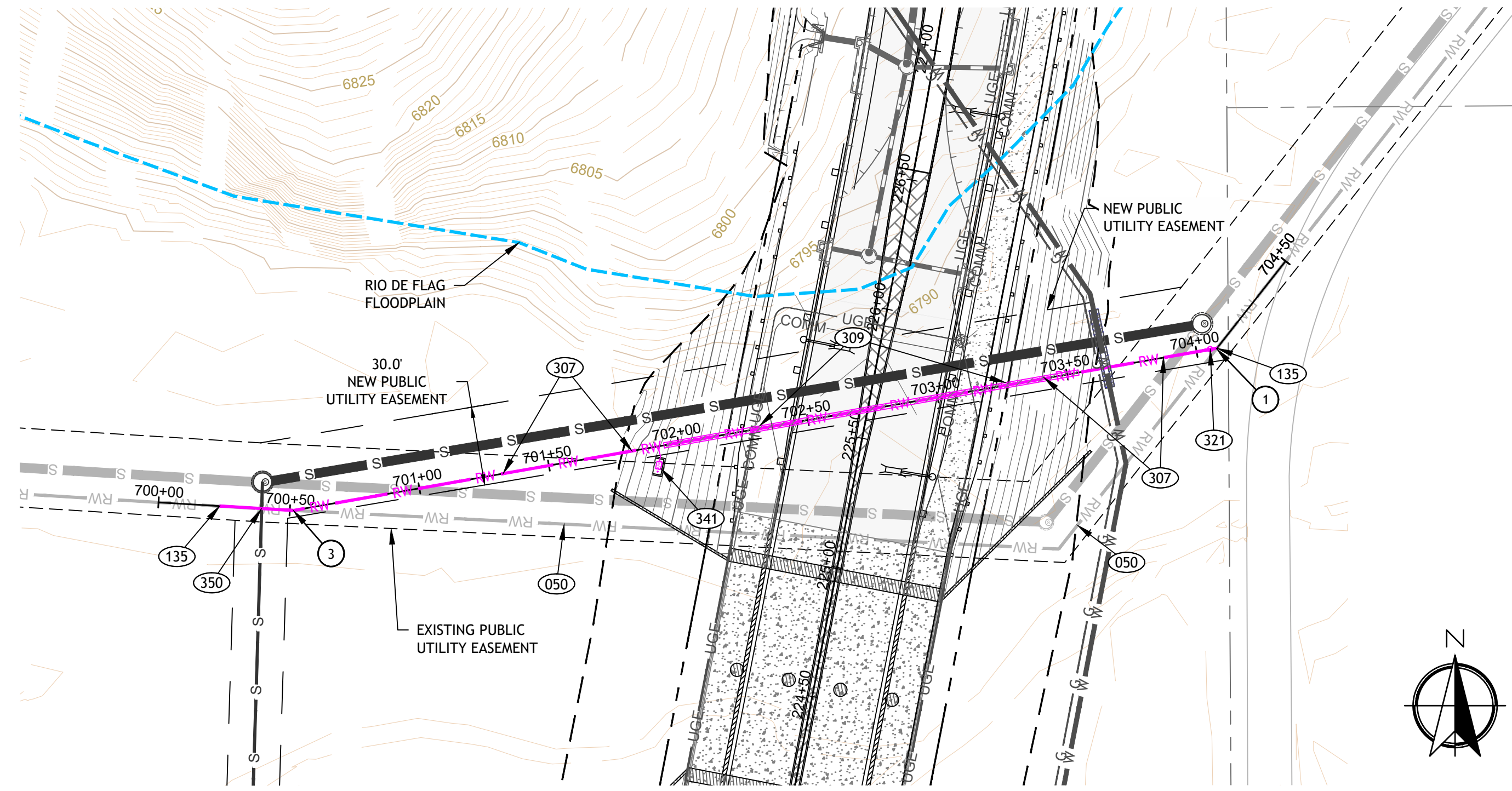


*Preliminary
 Not For
 Construction*

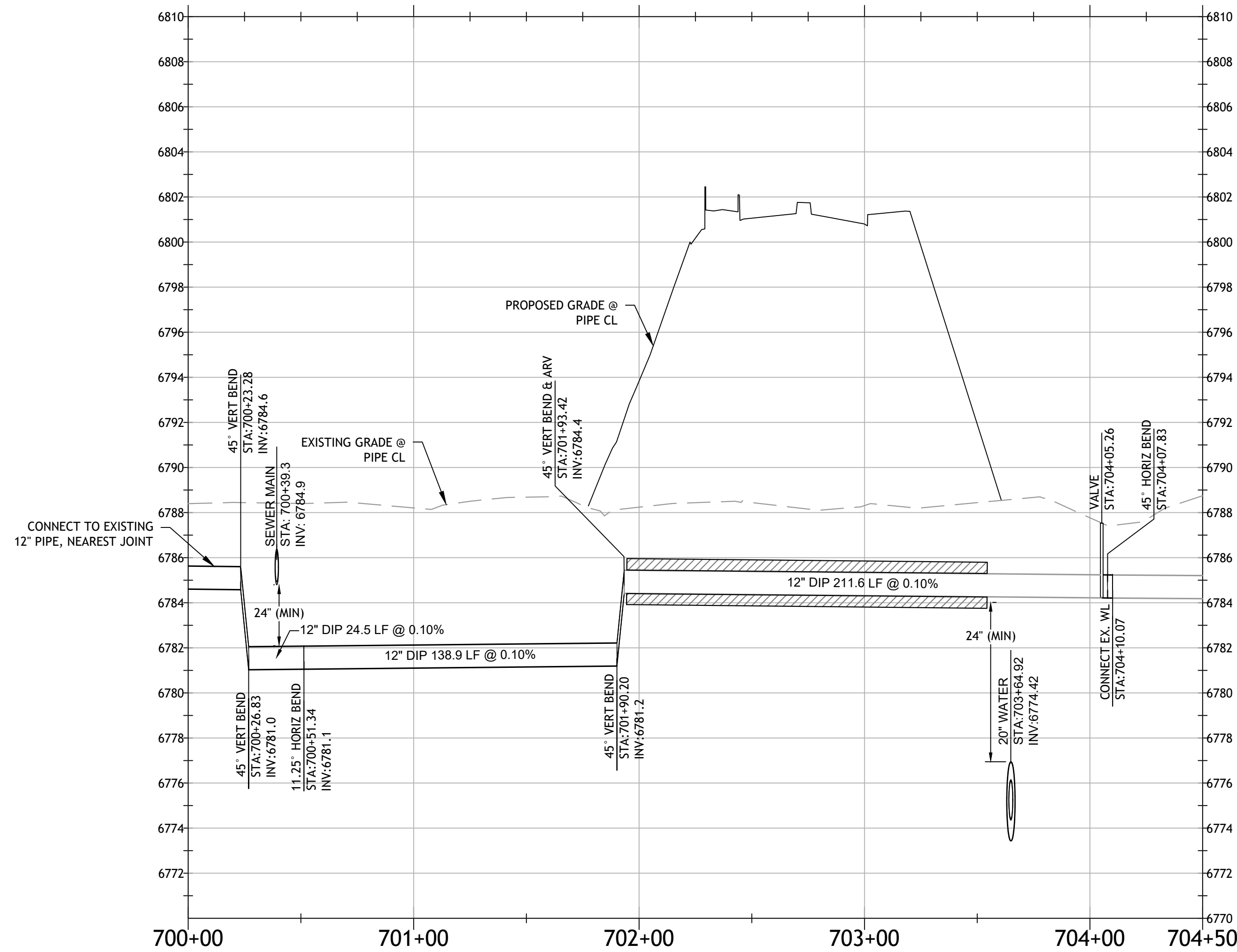
CITY OF FLAGSTAFF JW POWELL EXTENSION INTERSECTION WATER PROFILE	JOB NO: 17C0902	BY: DCW/LWQ	CHECKED: JOL
	DATE: MAY 2026		

W2.0

PLAN VIEW
SCALE 1" = 40'



PROFILE VIEW
HORIZ. SCALE 1" = 40'
VERT. SCALE 1" = 4'



CONSTRUCTION NOTES

REMOVALS (000)

050 420 LF
Remove & dispose existing reclaimed water main & appurtenances (as-builts show 12" D.I.P.)

ADJUSTMENTS (100)

135 1 LS
Connect to existing 12" D.I.P. reclaimed water main at nearest joint.

WATER (300)

307 385 LF
12" D.I.P. class 250 polyethylene encased reclaimed water main (purple). Trenching per COF Engineering Detail 09-01-032. Restrain joints per MAG Std Detail 303. Blocking per MAG Standard Det. 380 and City of Flagstaff Revision to MAG 13-21-002-0380

309 160 LF
Steel casing (24" min diameter) with spacers for reclaimed water main, welded joints per COF Engineering Standard 13-09-006-0001 and MAG Specification 602. Fill annular space with 3/8" pea gravel, install end seal. Station 701+95 to Station 703+55.

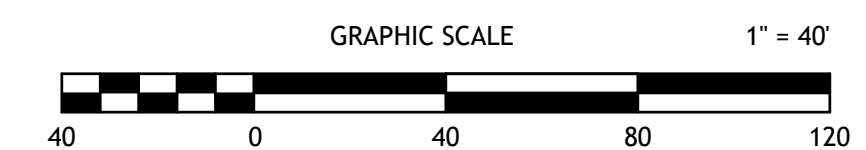
321 1 EA
12" Gate valve for reclaimed water main, class 250, epoxy coated resilient seat, blocker per MAG Standard Det. 301 and City of Flagstaff Revision to MAG 13-21-002-0380. Ring, frame, cover and collar per COF Engineering Standard 9-03-060 and 9-03-062.

341 1 EA
Air Release Valve, 1", per COF Engineering Detail 09-31-101, located at the high point of the reclaimed water main. Field locate box and vent pipe above the flood elevation and install concrete pad and curb as shown in Detail D, Sheet UT 3.3.

350 1 EA
Extra protection for water/sewer/storm crossings per MAG Standard Detail 404, Sheet UT3.1. For D.I.P., restrained or mechanical joints required 10-ft either side of the pipe crossing.

PIPE FITTINGS

- ① 45° BEND
- ② 22.5° BEND
- ③ 11.25° BEND
- ④ CROSS
- ⑤ TEE
- ⑥ CAP



201 E. Birch Ave., Suite 3
Flagstaff, AZ 86001
(928) 774-4046

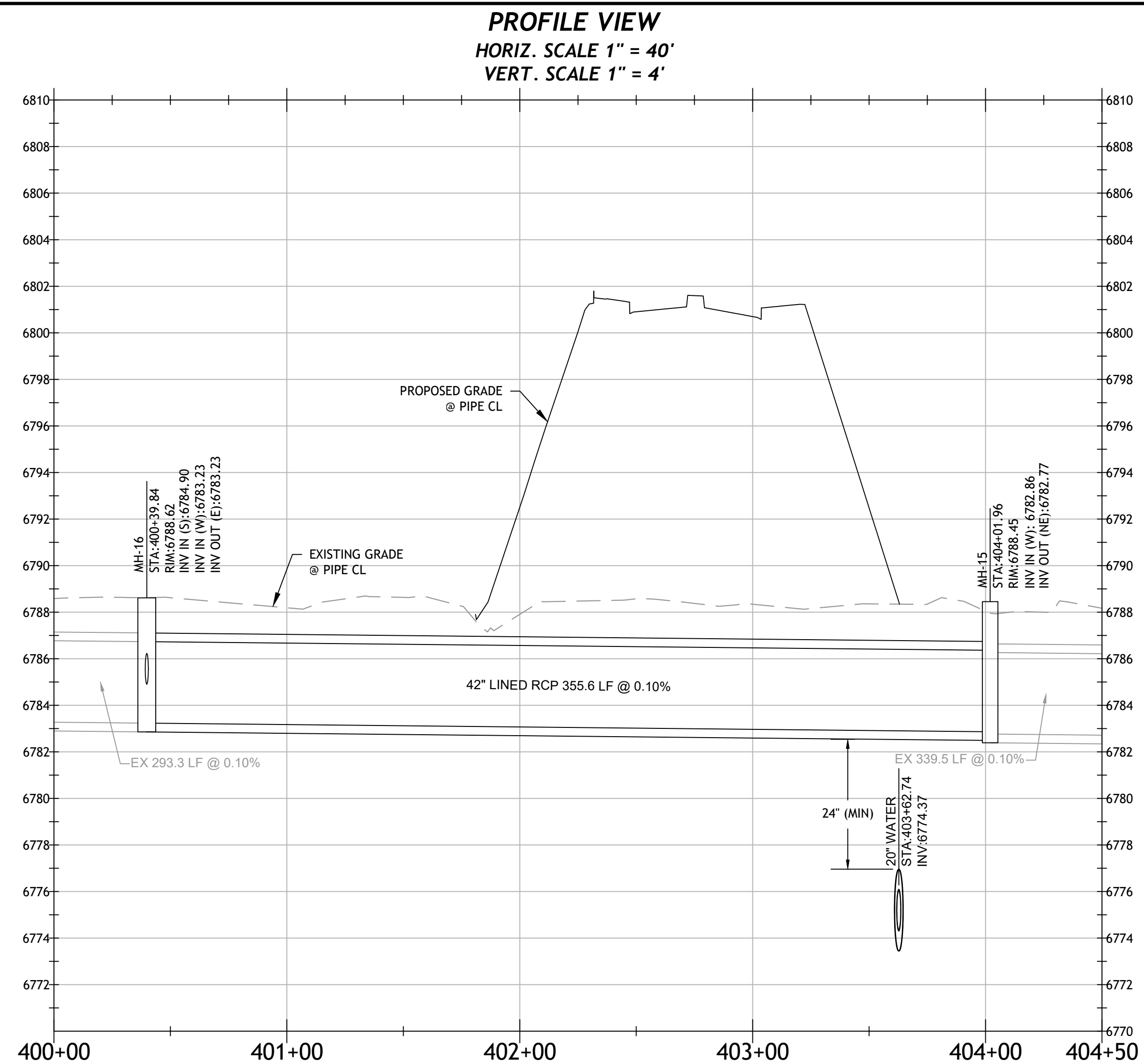
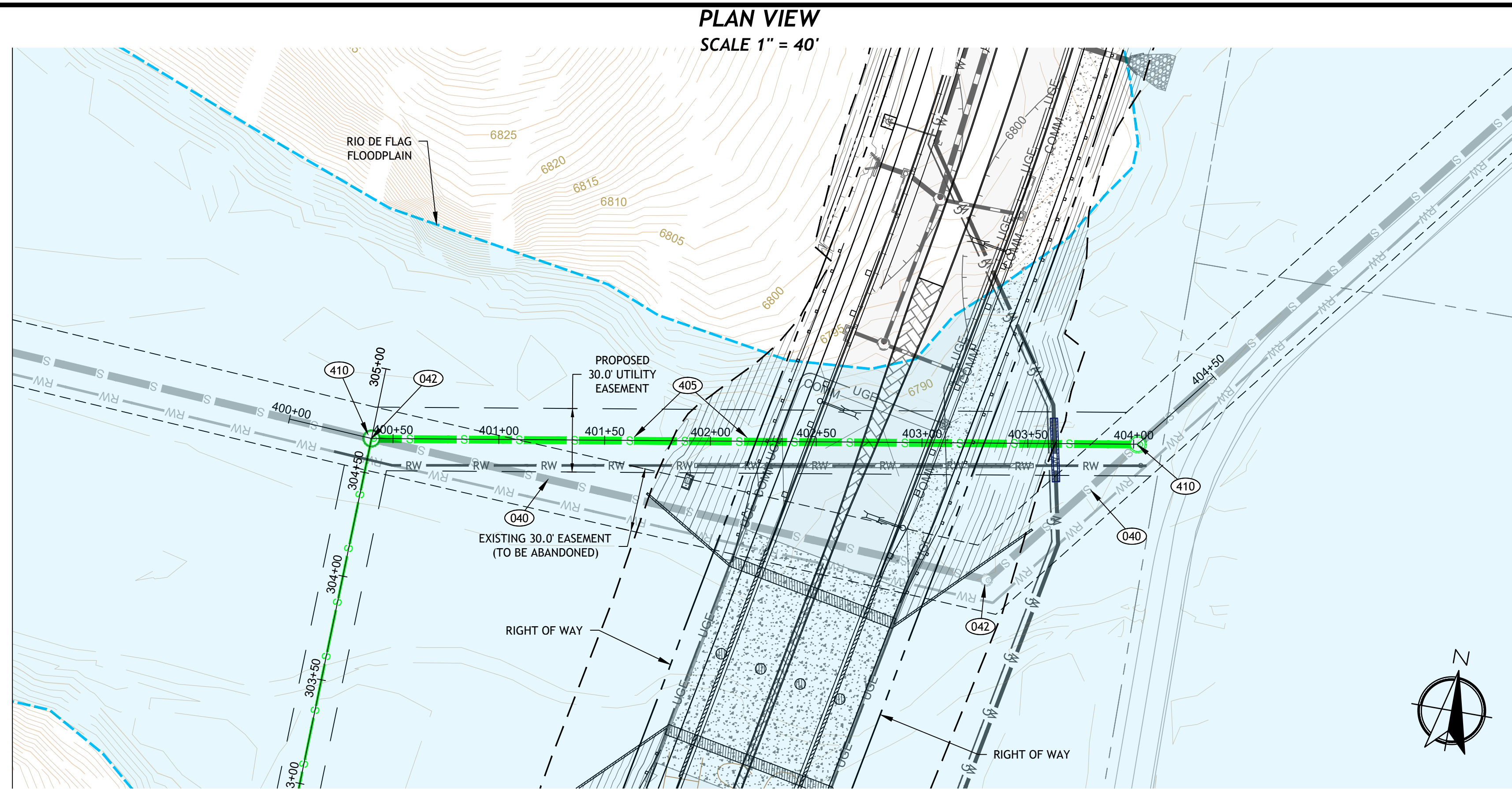


Preliminary
Not For
Construction

CITY OF FLAGSTAFF
JW POWELL EXTENSION
RECLAIMED WATER
PLAN & PROFILE

JOB NO: 17C092
DATE: MAY 2026
BY: DCW/LWQ
CHECKED: JOL

W3.0



CONSTRUCTION NOTES

- DEMO (000)**
040 395 LF
Remove & dispose 42" sewer.
- 042 2 EA
Remove & dispose manhole.
- SEWER (400)**
405 355 LF
42"-Lined RCP (Class IV) sewer transmission main per MAG Specification 615, 735 and 741. Trenching per Detail B, Sheet UT3.3.
- 410 2 EA
84" Dia sewer polymer concrete (water-tight) "flat top" manhole per MAG Standard Detail 419. 30" Frame and cover per MAG Standard Detail 424-2. Bolted and water tight.

Contact Arizona 811 at least two full working days before you begin excavation
ARIZONA 811
Call 811 or click Arizona811.com

REVISION	DATE	DESCRIPTION

201 E. Birch Ave., Suite 3
Flagstaff, AZ 86001
(928) 774-4046



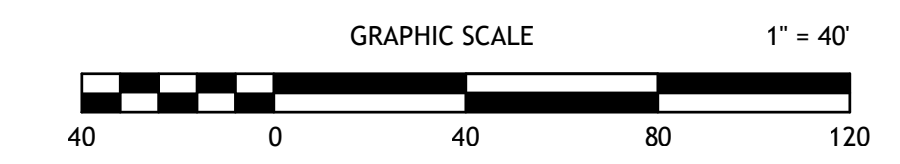
Preliminary
Not For
Construction

CITY OF FLAGSTAFF
JW POWELL EXTENSION
SEWER TRANSMISSION MAIN
PLAN & PROFILE

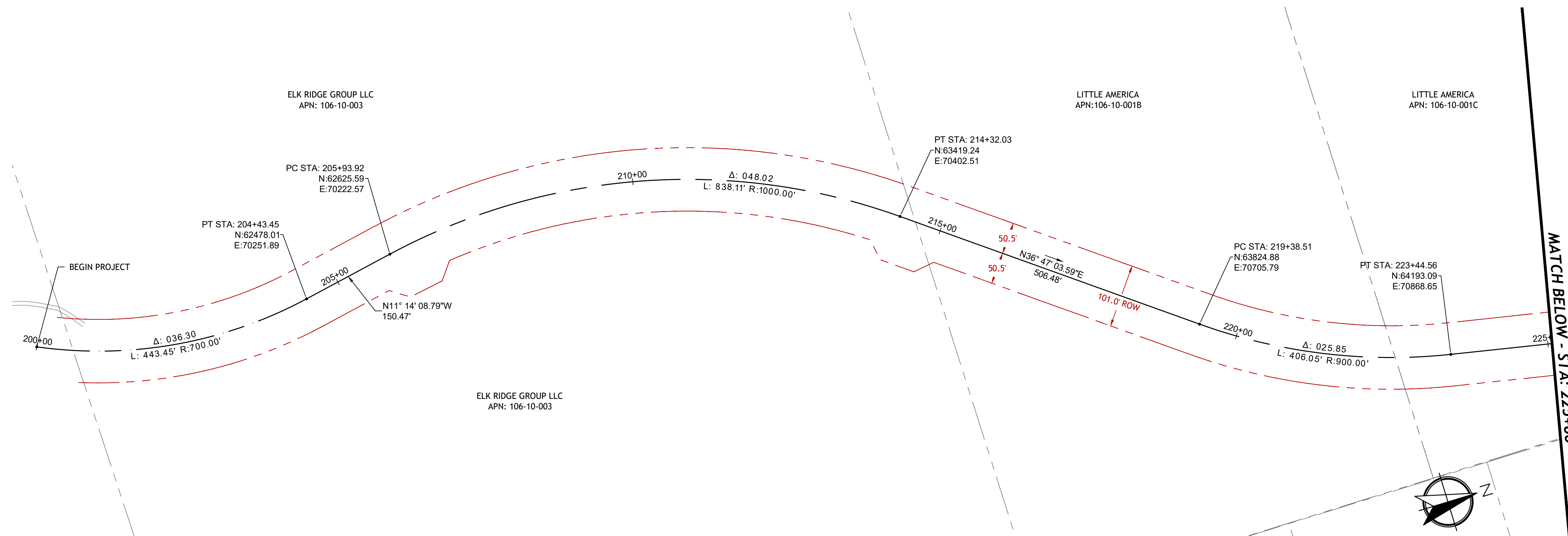
JOB NO: TCF02
DATE: MAY 2026

BY: DCW/LWQ
CHECKED: JOL

S2.0



PLAN VIEW
SCALE 1" = 100'



BASIS OF BEARINGS

LINEAR UNIT: INTERNATIONAL FOOT
 GEODETIC DATUM: NORTH AMERICAN DATUM 1983
 SYSTEM: ARIZONA LDP (LOW DISTORTION PROJECTION)
 PROJECTION: TRANSVERSE MERCATOR
 LATITUDE OF GRID ORIGIN: 35° 00' 00" N
 LONGITUDE OF CENTRAL MERIDIAN: 111° 37' 00" W
 NORTHING AT GRID ORIGIN: 0.000 FT
 EASTING AT CENTRAL MERIDIAN: 70,000.00 FT
 CENTRAL MERIDIAN SCALE FACTOR: 1.000333 (EXACT)

BASIS OF ELEVATION

VERTICAL DATUM: NAVD88

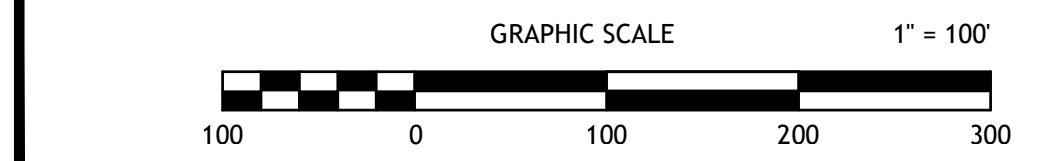
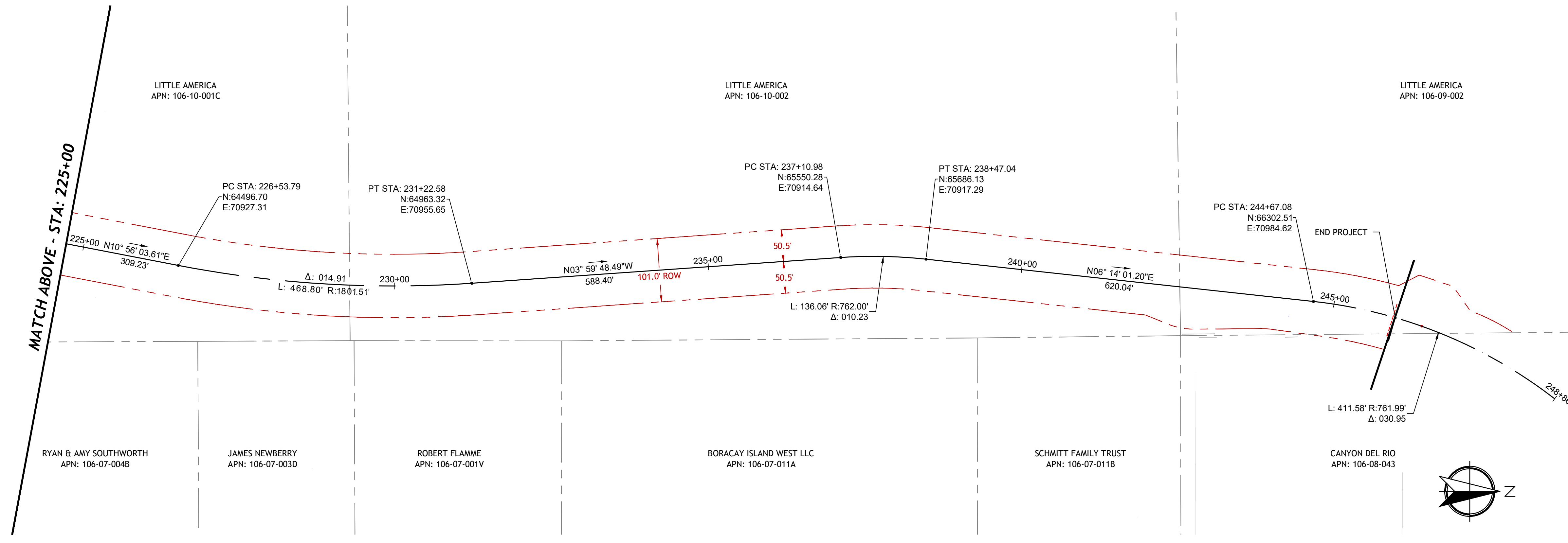
SOURCE

PROJECT CONTROL PER THE TOPOGRAPHIC SURVEY EXHIBIT E JW POWELL BLVD EXTENSION PROJECT (LOCATED IN SECTIONS 24, 26, AND 27 T21N, R7E, OF THE G6SRM, COCONINO COUNTY, ARIZONA) SURVEY PROVIDED BY NORTHLAND EXPLORATIONS SURVEYS, INC. PROJECT NUMBER 1006-20, DATED 12-17-2024.



DATE	DESCRIPTION	REVISION

PLAN VIEW
SCALE 1" = 100'



201 E. Birch Ave., Suite 3
 Flagstaff, AZ 86001
 (928) 774-4046



Preliminary
 Not For
 Construction

CITY OF FLAGSTAFF JW POWELL EXTENSION HORIZONTAL CONTROL	BY: DCW/LWQ	CHECKED: JOL
	JOB NO: 17C0F02	DATE: MAY 2026
HC1.0	90% DESIGN COF PROJECT NO: 03-16010	

