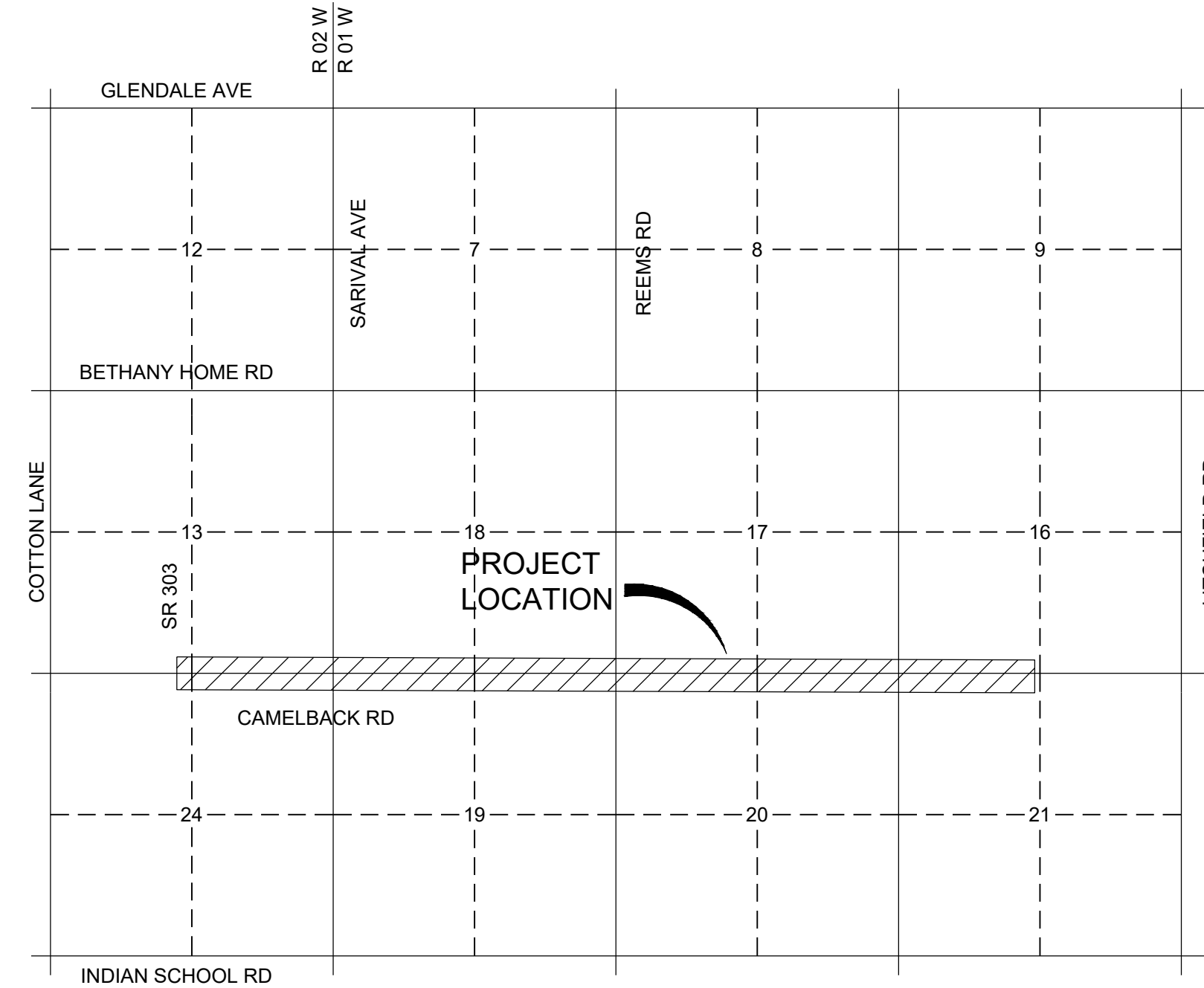




CAMELBACK RD (SR 303L TO CITY LIMITS)

PROJECT NO: 42038 - SWPPP

A PORTION OF THE SOUTH HALF OF SECTION 13, AND NORTH HALF OF SECTION 24, TOWNSHIP 2 NORTH, RANGE 2 WEST AND NORTH HALF OF SECTIONS 19, 20 AND SOUTH HALF OF SECTIONS 17, 18, TOWNSHIP 2 NORTH, RANGE 1 WEST OF THE GILA AND SALT RIVER BASE AND MERIDIAN, MARICOPA COUNTY, ARIZONA.



VICINITY MAP

PROJECT NARRATIVE

CAMELBACK ROAD PROJECT INCLUDES ROADWAY IMPROVEMENTS AND WIDENING FROM SR 303L TO THE CITY LIMIT (EAST OF 146TH AVE).

THE SWPPP CONSISTS OF UTILIZING WATTLES, SEEDING, GRANITE, GRATE INLET PROTECTION, AND STABILIZED CONSTRUCTION ENTRANCES/EXITS. THIS PACKAGE CONTAINS ONLY THE EROSION CONTROL PLANS.

OFFSITE FLOWS ARE PREVENTED ON THE NORTH AND SOUTH SIDE (EAST OF ALSUP) BY EXISTING EARTHEN DRAINAGE CHANNEL. OFFSITE FLOWS SOUTH OF ALSUP ARE CONTAINED BY DRAINAGE BASINS WITHIN EXISTING DEVELOPMENT.

CAMELBACK WASH RUNS ALONG THE NORTH SIDE OF THE PROJECT ON THE WEST END. DURING CONSTRUCTION IT WILL BE PROTECTED BY WATTLES AS PERIMETER CONTROL. FINAL PROTECTIONS WILL INCLUDE A VERTICAL CURB ALONG THE ROADWAY WITH SEED IN ALL UNPAVED DISTURBED AREAS.

PRE AND DURING CONSTRUCTION TEMPORARY EROSION AND SEDIMENT CONTROL MEASURES WILL CONSIST OF WATTLE, GRATE INLET PROTECTION, AND STABILIZED CONSTRUCTION ENTRANCES/EXITS.

POST CONSTRUCTION, PERMANENT STABILIZATION, WILL CONSIST OF GRANITE MULCH IN THE MEDIANS AND SEEDING WITHIN ALL UNPAVED DISTURBANCE AREAS ALONG EACH SHOULDER AS IDENTIFIED IN THE LANDSCAPE PLANS. PERMANENT STABILIZATION WILL INCLUDE ROCK PROTECTION AT HEADWALLS.

CONSTRUCTION ENTRANCE/EXIT LOCATION WILL BE DETERMINED BY THE CONTRACTOR WITHIN THEIR SUBMITTAL FOR NOI.

SHEET INDEX

SHEET	DRAWING	DESCRIPTION
1	CS	COVER SHEET
2	ED-1.01	EROSION CONTROL CMIS
3	ED-1.02	EROSION CONTROL SUMMARY SHEET
4-5	ED-1.03 - ED-1.04	EROSION CONTROL DETAIL SHEETS
6-11	E-1.01 - E-1.06	EROSION CONTROL PLAN SHEETS

CITY OF GOODYEAR

MAYOR

JOE PIZZILLO

VICE MAYOR

BRANNON HAMPTON

COUNCIL MEMBERS

WALLY CAMPBELL
LAURA KAINO
VICKI GILLIS
BENITA BECKLES
TREY TERRY

CITY MANAGER

WYNETTE REED

CITY ENGINEER

STEPHEN SCINTO, P.E., CFM

ENGINEER

STANLEY CONSULTANTS
CONTACT: DIANA KELLY
3133 E CAMELBACK ROAD, STE 100
PHOENIX, ARIZONA 85016
PHONE: (602) 333-2362
FAX: (602) 333-2333

OWNER

CITY OF GOODYEAR
STEPHEN SCINTO, P.E. (CITY ENGINEER)
14455 W VAN BUREN ST
GOODYEAR, ARIZONA 85338
PHONE: (623) 932-3004
FAX: (623) 932-3003

SURVEYOR

WOOD, PATEL & ASSOCIATES, INC
GABRIEL S. RIOS
2051 WEST NORTHERN AVE, SUITE 100
PHOENIX, AZ 85021
(602) 335-8500
SURVEYOR@WOODPATEL.COM

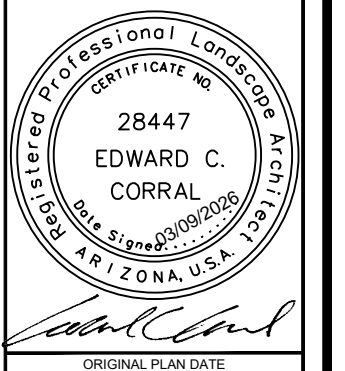
BENCHMARK

BENCHMARK NO. G371
3-INCH BRASS CAP AT INTERSECTION OF
CAMELBACK ROAD AND ALSUP AVE
(NAVD88) ELEVATION = 1056.34

ZONING

NOT APPLICABLE

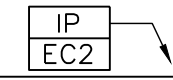

DATA CERTIFICATION	
I HEREBY CERTIFY THAT THIS DESIGN IS BASED ON ACCURATE FIELD DATA WHICH HAS BEEN CHECKED IN THE FIELD PRIOR TO SUBMISSION OF THESE PLANS TO THE CITY FOR APPROVAL.	
BY 	March 09, 2026
	DATE
	
	(SEAL)

PROJECT TYPE	CAMELBACK ROAD IMPROVEMENTS
PROJECT NAME	CAMELBACK ROAD SR 303L TO CITY LIMITS
PROJECT NUMBER	CON-22-6297
SEAL	
ORIGINAL PLAN DATE	March 9, 2026
LATEST REVISION DATE	
SHEET NUMBER	1 OF 11
PROJECT NUMBER	CON-22-6297

CALL TWO WORKING DAYS BEFORE YOU DIE!
602-263-1100
1-800-STAKE-IT
(OUTSIDE MARICOPA COUNTY)

CITY OF GOODYEAR
 GENERAL NOTES FOR STORM WATER POLLUTION PREVENTION, LARGE SITES

EROSION AND SEDIMENT CONTROL LEGEND

SYMBOL	DTL	DESCRIPTION	QTY.
NOT SHOWN	EC1	*Erosion Control (Construction Entrance)	334 SY
	EC2	Erosion Control (Grate/Curb Inlet Protection)	16 EACH
	EC3	Erosion Control (9" Wattle)	10,112 LF

EROSION AND SEDIMENT CONTROL SUMMARY NOTES:

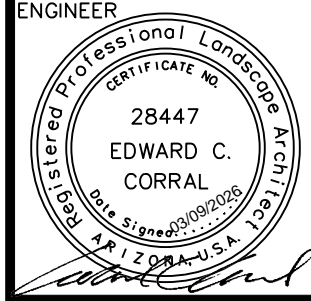

1. THE PLACEMENT OF ALL EROSION & SEDIMENT CONTROL MEASURES LISTED ABOVE MAY BE SUBJECT TO CHANGE AND MAY BE ADJUSTED BY THE ENGINEER.
2. THE ENGINEER IS RESPONSIBLE TO VERIFY THE CONTRACTOR HAS SUFFICIENT EROSION & SEDIMENT CONTROL MEASURES IN PLACE TO CONTAIN ALL STORM WATER RUNOFF SEDIMENT WITHIN THE PROJECT LIMITS AND ALL DISTURBED GROUND FROM EROSION.
3. *THE LOCATION OF EROSION CONTROL (CONSTRUCTION ENTRANCE) ARE NOT SHOWN ON PLANS. FINAL LOCATION(S) ARE DEPENDENT ON CONTRACTOR USE SITES AND APPROVED BY THE ENGINEER. THE QUANTITY SHOWN IS BASED ON THE NEED FOR UP TO 2 CONSTRUCTION ENTRANCES/EXITS.
4. THE EROSION AND SEDIMENT CONTROL ITEMS ON THESE PLANS ARE MEASURED AND PAID UNDER A SINGLE BID ITEM. SEE BID TABULATION NUMBER 107.01000.
5. SEE DRAINAGE PLANS FOR HEADWALL AND PIPE INLET/OUTLET PROTECTION.
6. SEE LANDSCAPE PLANS FOR SEEDING AND GRANITE.

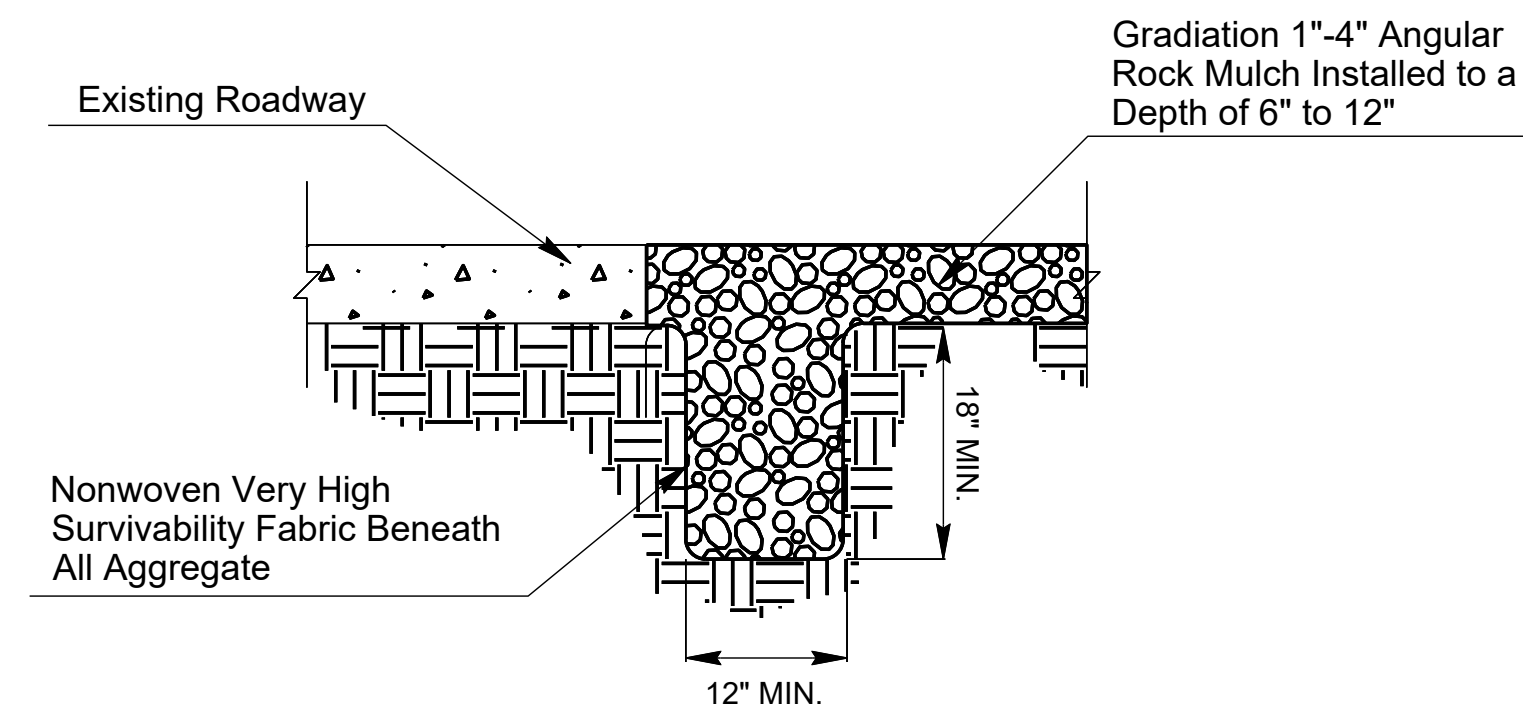
- A. ALL GENERAL CONSTRUCTION NOTES SHALL APPLY.
 - B. APPROVAL OF THIS DOCUMENT INDICATES THE CITY OF GOODYEAR ENGINEERING DEPARTMENT HAS REVIEWED AND FOUND THIS TO BE IN GENERAL COMPLIANCE WITH THE CITY'S STORM WATER MANAGEMENT PLAN AND THAT THE CITY OF GOODYEAR IS AT NO TIME RESPONSIBLE FOR THE APPLICANT'S/OPERATOR'S DUTIES TO COMPLY WITH ANY FEDERAL, STATE, OR LOCAL LAW OR ORDINANCE.
 - C. IT IS THE OPERATOR'S RESPONSIBILITY TO ENSURE THE SWPPP IS MAINTAINED IN COMPLIANCE WITH ALL FEDERAL, STATE, AND LOCAL REQUIREMENTS. THIS INCLUDES IMPLEMENTATION, CONSTRUCTION, INSPECTION, MAINTENANCE, REPLACEMENT, UPGRADING OF FACILITIES AND RECORD MANAGEMENT. ANY VIOLATIONS AND FINES ARE THE RESPONSIBILITY OF THE OWNER/OPERATOR AND/OR SITE CONTRACTOR.
 - D. A CITY OF GOODYEAR CONSTRUCTION STORM WATER PERMIT AND A GRADING AND DRAINAGE PERMIT ARE REQUIRED PRIOR TO PERFORMING ANY LAND DISTURBANCE ACTIVITIES. A COPY OF THE PERMITS AND APPROVED PLANS SHALL BE MAINTAINED ON-SITE.
 - E. THE CONTRACTOR IS RESPONSIBLE FOR LOCATING AND CONFIRMING THE DEPTH OF EXISTING UTILITY LINES WITHIN PROPOSED SEDIMENT AND RETENTION BASIN AREAS. IF A BASIN CANNOT BE CONSTRUCTED PER PLAN AS A RESULT OF CONFLICT WITH UNDERGROUND UTILITIES THE CONTRACTOR SHALL CALL THE CITY AND DESIGNER AND REQUEST MODIFICATION OF THE BASIN DESIGN.
 - F. BMPS SHALL BE INSTALLED IN SUCH A MANNER SO THAT STORM WATER DISCHARGES DO NOT CAUSE ANY FLOODING OR DAMAGE TO ADJACENT PROPERTIES OR FLOWS OF SEDIMENT ONTO PUBLIC STREETS, SIDEWALKS, DRAINAGE CHANNELS, OR RIGHTS-OF-WAYS.
 - G. A COPY OF THE APPROVED STORM WATER POLLUTION PREVENTION PLAN (SWPPP), NOTICE OF INTENT (NOI) AND ALL RELATED RECORDS SHALL BE MAINTAINED ON THE SITE AND AVAILABLE FOR REVIEW UPON REQUEST TO THE ARIZONA DEPARTMENT OF ENVIRONMENTAL QUALITY (ADEQ) AND THE CITY OF GOODYEAR. THE CITY OF GOODYEAR MAY AT ANY TIME PERFORM A COMPLIANCE INSPECTION OF THE SITE.
 - H. THE OPERATOR SHALL POST THE ADEQ AUTHORIZATION NUMBER(S) IN A CONSPICUOUS LOCATION NEAR THE MAIN ENTRANCE OF THE CONSTRUCTION SITE AND RETAIN A COPY OF THE AUTHORIZATION CERTIFICATE WITH THE SWPPP.
 - I. THE FACILITIES SHOWN ON THIS PLAN SHALL BE CONSTRUCTED IN CONJUNCTION WITH ALL CLEARING AND GRADING ACTIVITIES IN SUCH A MANNER AS TO ENSURE THAT SEDIMENT-LADEN WATER DOES NOT ENTER THE DRAINAGE SYSTEM OR VIOLATE APPLICABLE WATER STANDARDS. ADDITIONALLY, THEY SHALL BE INSTALLED AND IN OPERATION PRIOR TO ANY GRADING OR LAND CLEARING. WHEREVER POSSIBLE, NATURAL VEGETATION SHALL BE MAINTAINED TO ASSIST IN SILT CONTROL.
 - J. THE OPERATOR SHALL PERFORM, AT A MINIMUM, A VISUAL INSPECTION OF THE CONSTRUCTION SITE ONCE EVERY SEVEN CALENDAR DAYS OR ONCE EVERY 14 CALENDAR DAYS AND WITHIN 24 HOURS OF ANY RAIN EVENT GREATER THAN OR EQUAL TO 1/2-INCH AS RECORDED BY THE CLOSEST FLOOD CONTROL DISTRICT OF MARICOPA COUNTY RAIN GAGE. IF WITHIN 1/4 MILE OF AN IMPAIRED WATER, INSPECTIONS SHALL BE PERFORMED AT A MINIMUM OF ONCE EVERY SEVEN CALENDAR DAYS AND SHOULD INCLUDE VISUAL OBSERVATIONS OF STORM WATER DISCHARGES AT ALL DISCHARGE LOCATIONS WITHIN ONE BUSINESS DAY AFTER EACH RAIN EVENT OF 1/2-INCH OR GREATER, AS RECORDED BY THE CLOSEST FLOOD CONTROL DISTRICT OF MARICOPA COUNTY RAIN GAGE. THE OPERATOR SHALL PREPARE A REPORT DOCUMENTING HIS/HER FINDINGS ON THE CONDITIONS OF THE SWPPP CONTROLS AND NOTE ANY EROSION PROBLEM AREAS. THE OPERATOR'S REPORT IS TO BE MAINTAINED ON SITE BY THE OPERATOR.
- K. THE OPERATOR OF THE SITE SHALL ALSO MAINTAIN RECORDS WITH THE FOLLOWING INFORMATION:
 1. THE DATES WHEN MAJOR GRADING ACTIVITIES OCCUR IN A PARTICULAR AREA; AND
 2. THE DATES WHEN CONSTRUCTION ACTIVITIES CEASE IN AN AREA, TEMPORARILY OR PERMANENTLY; AND
 3. THE DATES WHEN AN AREA IS STABILIZED, TEMPORARILY OR PERMANENTLY; AND
 4. THE DATES OF MAINTENANCE/REPLACEMENT OR REMOVAL OF BEST MANAGEMENT PRACTICES (BMPS).
- L. FACILITIES SHALL BE MAINTAINED AS NECESSARY TO ENSURE THEIR CONTINUED FUNCTIONING. IN ADDITION, ALL CONTROLS AS OUTLINED IN THE SWPPP SHALL BE MAINTAINED IN A SATISFACTORY CONDITION UNTIL SUCH TIME THAT CONSTRUCTION IS COMPLETED, PERMANENT DRAINAGE FACILITIES ARE OPERATIONAL, AND THE POTENTIAL FOR EROSION HAS PASSED.
- M. THE OPERATOR SHALL AMEND THE SWPPP AS NECESSARY DURING THE COURSE OF CONSTRUCTION TO RESOLVE ANY PROBLEM AREAS WHICH BECOME EVIDENT DURING CONSTRUCTION, ROUTINE INSPECTIONS, AND/OR PERIODS OF RAINFALL. IF IT IS DETERMINED THAT CURRENT CONTROLS ARE NOT EFFECTIVE AT MINIMIZING POLLUTANT DISCHARGES FROM THE SITE, THE OPERATOR SHALL TAKE IMMEDIATE EFFORTS TO CORRECT THE PROBLEM WITHIN 72 HOURS AND/OR PRIOR TO THE NEXT RAIN EVENT. THE AMENDED PLAN SHALL BE MAINTAINED ON-SITE AND IF REQUIRED, SUBMITTED WITHIN 15 CALENDAR DAYS TO ADEQ.
- N. IF, AT ANY TIME, THIS SITE BECOMES IMPACTED BY OTHER CONSTRUCTION, STORM WATER POLLUTION PREVENTION ACTIVITIES SHALL BE COORDINATED BETWEEN THE SITES AND DOCUMENTED IN THE PROJECT SWPPP.
- O. ONCE CONSTRUCTION ACTIVITIES HAVE BEEN COMPLETED AND THE SITE HAS MET FINAL STABILIZATION REQUIREMENTS WITH ALL TEMPORARY BMP'S REMOVED, THE AUTHORIZED SITE REPRESENTATIVE MAY FILE A NOTICE OF TERMINATION (NOT) WITH ADEQ, WITH A COPY SUBMITTED TO THE CITY OF GOODYEAR ENGINEERING DEPARTMENT.
- P. THE OPERATOR SHALL SUBMIT A COPY OF THE ADEQ NOT ACKNOWLEDGEMENT LETTER TO THE CITY, WHICH WILL EFFECTIVELY TERMINATE COVERAGE UNDER THE CONSTRUCTION STORM WATER PERMIT ISSUED BY THE CITY.

PLOT DATE: Feb 25, 2026

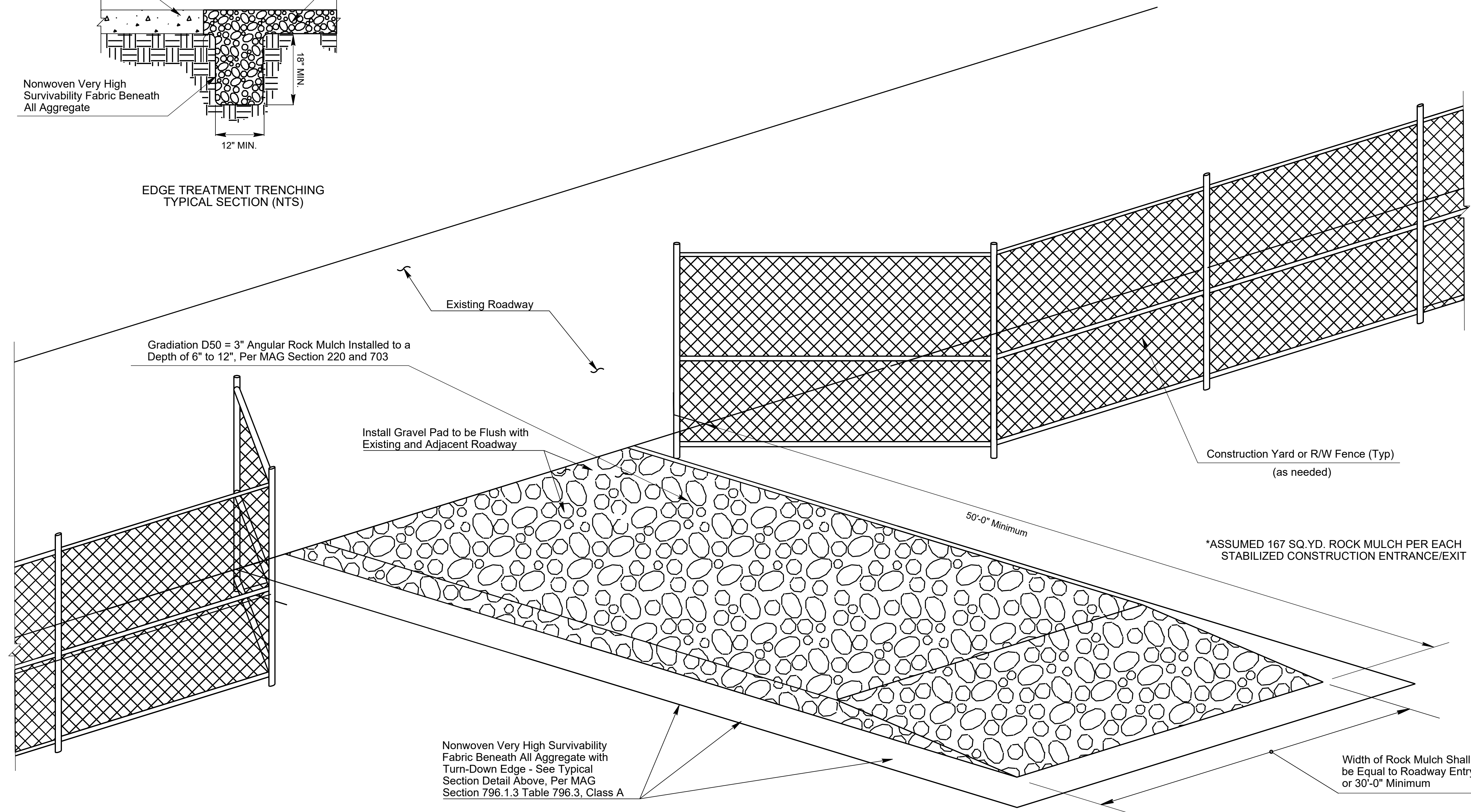
FILE: C:\projects\dotasource-1\common\41405172\CBR_42030_Erosion_Detail_Sheets_ED001-ED004.dwg

CALL TWO WORKING DAYS BEFORE YOU DIG
602-263-1100
 1-800-STAKE-IT
 (OUTSIDE MARICOPA COUNTY)

DATE	REVISION	BY
 		
CITY OF GOODYEAR ENGINEERING DEPARTMENT 195 N. 145TH AVE P.O. BOX 5100 BUILDING D GOODYEAR AZ 85338		
SHEET TITLE		
EROSION CONTROL SUMMARY SHEET		
PROJECT TITLE		
CAMELBACK ROAD SR 303L TO CITY LIMIT		
SCALE	DESIGNED	BID NO.
N/A	BSP	02/2026
DRAWN	AS-BUILT	PROJECT NO.
SRD		CON-22-6297
		SHT
		ED-02
		3 OF 11



EDGE TREATMENT TRENCHING
TYPICAL SECTION (NTS)



BIRD'S EYE VIEW (NTS)

NOTES:

1. Install Stabilized Construction Entrance/Exit Gravel Pad for traffic entering or exiting a construction site where sedimentation, clay, silt or other pollutants can be tracked onto public roads and/or adjacent water bodies, as approved by the Engineer. It may also be applied for construction entrance/exit wind erosion/dust control, as approved by the Engineer.
2. Locate new Construction Entrance(s)/Exit(s) at appropriate project entrance/exit points as determined in field with the approval of the Engineer. Relocate Stabilized Construction Entrance/Exit Gravel Pad as needed as project progresses. Replace Rock Mulch materials in drive paths when dirt or mud accumulates.
3. Rock Mulch materials shall be fractured/crushed rocks in angular shape. Natural river-run materials, especially rounded natural river rocks are not acceptable.
4. Make field adjustments and corrections of Construction Entrance/Exit Gravel Pad immediately if it is causing flooding and/or affecting roadway safety.
5. Install nonwoven fabric when water is applied for construction vehicle/equipment cleaning on Gravel Pad.
6. Edge treatment trenching and nonwoven fabric shall not be required if NO wash water is used for vehicle/equipment cleaning.
7. The depth of Gravel Pad varies from 6" to 12" based on the necessities of construction vehicle/equipment as per the approval of the Engineer.

DETAIL EC1_{NTS}

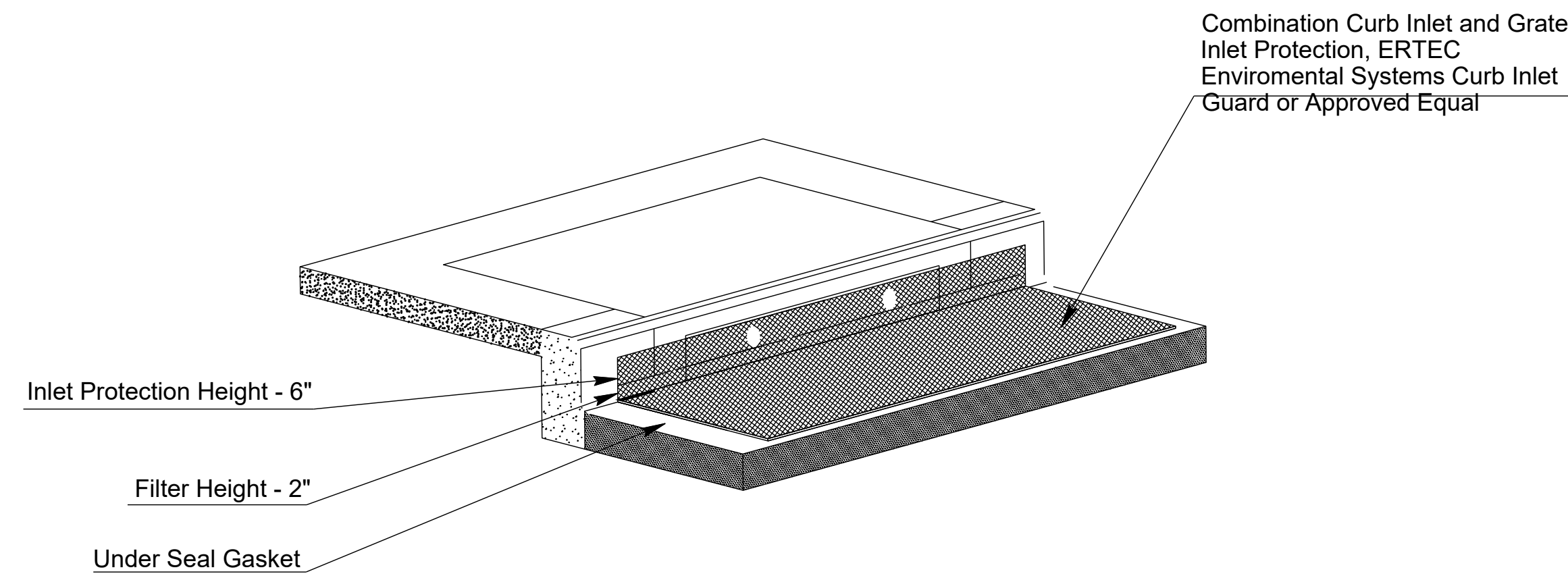
STABILIZED CONSTRUCTION ENTRANCE/EXIT GRAVEL PAD

CALL TWO WORKING DAYS BEFORE YOU DIG
602-263-1100
1-800-STAKE-IT
(OUTSIDE MARICOPA COUNTY)

DATE	REVISION	BY
ENGINEER		
		CITY OF GOODYEAR ENGINEERING DEPARTMENT 195 N. 145TH AVE P.O. BOX 5100 BUILDING D GOODYEAR AZ 85338
SHEET TITLE		
EROSION CONTROL DETAIL SHEET		
PROJECT TITLE		
CAMELBACK ROAD SR 303L TO CITY LIMIT		
SCALE	DESIGNED	BID NO.
N/A	BSP	02/2026
DRAWN	AS-BUILT	PROJECT NO.
SRD		CON-22-6297
		SHT
		ED-03
		4 OF 11

PLOT DATE: Feb 25, 2026

FILE: C:\projects\datasource-1\common\41405172\CBR_42030_Erosion Detail Sheets_ED001-ED004.dwg

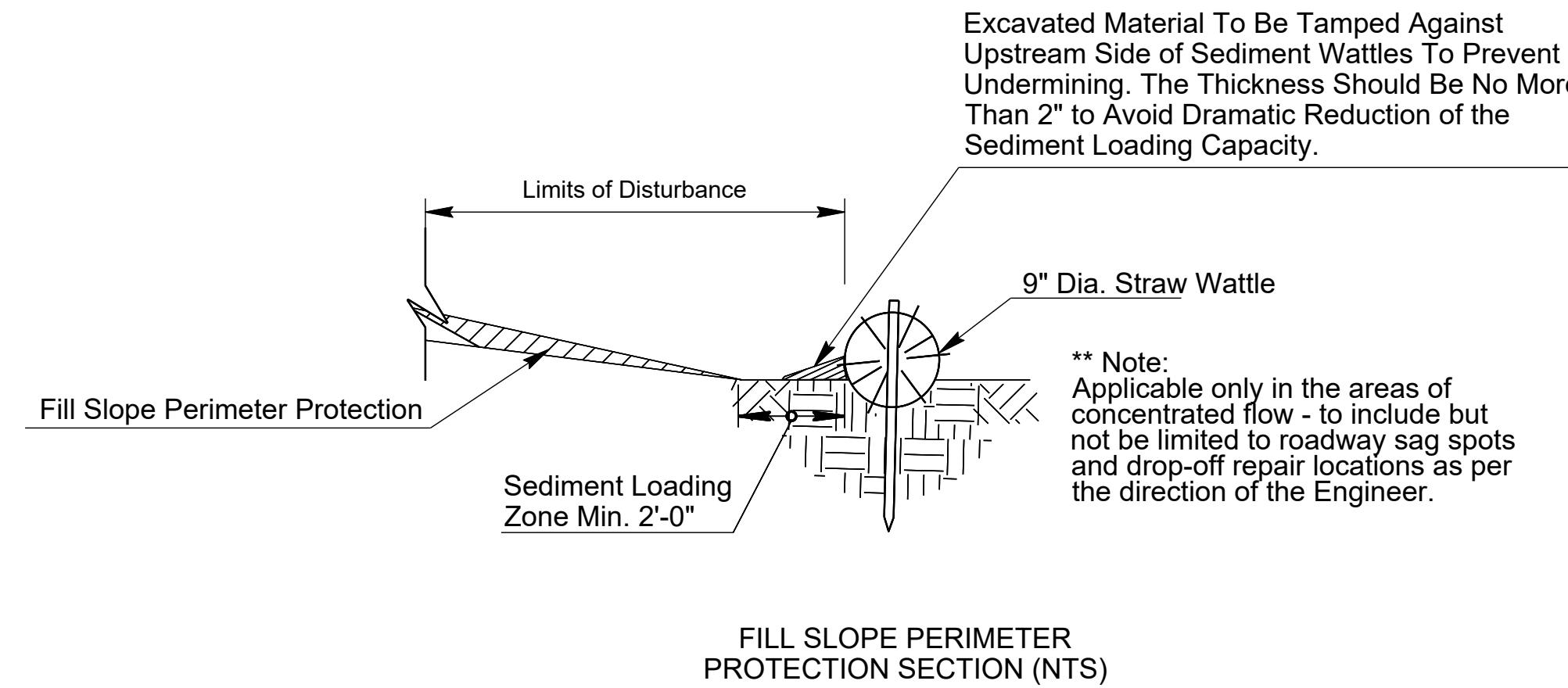


NOTES:

1. Placement and installation shall be accomplished per curb inlet protection manufacturer recommendations for traffic and non-traffic conditions with approval of Engineer.
2. Perform maintenance as required. Inspect following rainfall events and at least daily during prolonged rainfall. Maintain to provide an adequate sediment holding capacity. Debris shall be removed when sediment accumulation reached 50% of barrier height. Removed sediment shall be incorporated in the project at designated locations, as approved by Engineer.
3. For Grate/Curb Inlets over 5', add additional 6' segments to cover Grate/Curb Inlets.
4. Field adjust and correct inlet protection immediately if it is causing flooding and/or affecting roadway safety.

DETAIL EC2_{NTS}

GRATE/CURB INLET PROTECTION



NOTES:

1. Install Sediment Wattle in conformance with manufacturers' specifications to meet site conditions in accordance with good engineering practices.
2. Sediment Wattles shall be in continuous contact with trench bottom and sides. Do not overlap wattle ends on top of each other.
3. Butt adjoining wattles tightly against each other. Drive the first end stake of the second wattle at an angle toward the first wattle to help abut them tightly.
4. Repair any rills or gullies promptly. Make field adjustments and corrections of Sediment Wattle immediately if it is causing flooding, erosion, and/or affecting roadway safety.
5. Installation and maintenance of Sediment Wattles shall not negatively impact traffic safety, nor the designed function of roadway or bridge drainage facilities.
6. Install and maintain Sediment Wattles to carry the storm water of at least 2-year, 24-hour events.

DETAIL EC3_{NTS}

SEDIMENT WATTLE

CALL TWO WORKING DAYS BEFORE YOU DIG
602-263-1100
 1-800-STAKE-IT
 (OUTSIDE MARICOPA COUNTY)

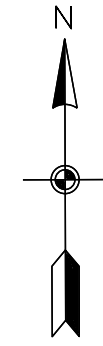
DATE		REVISION		BY	
CITY OF GOODYEAR ENGINEERING DEPARTMENT 195 N. 145TH AVE P.O. BOX 5100 BUILDING D GOODYEAR AZ 85338					
SHEET TITLE EROSION CONTROL DETAIL SHEET					
PROJECT TITLE CAMELBACK ROAD SR 303L TO CITY LIMIT					
SCALE N/A	DESIGNED BSP	02/2026	BID NO.	SHEET ED-04	
DRAWN SRD	AS-BUILT	PROJECT NO. CON-22-6297	5 OF 11		

PLOT DATE: Feb 25, 2026

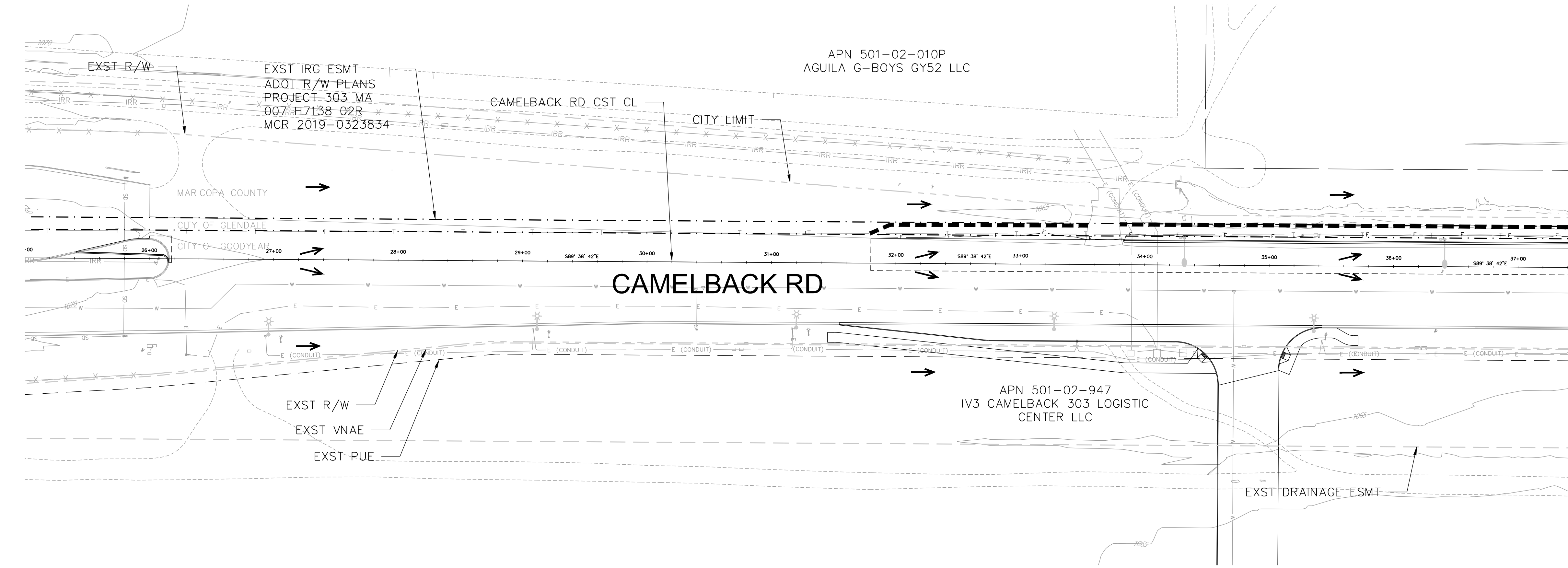
FILE: C:\projects\dotasource-1\common\41405172\CBR_42030_ECSP_Sheets_EC01-EO06.dwg

EROSION CONTROL LEGEND

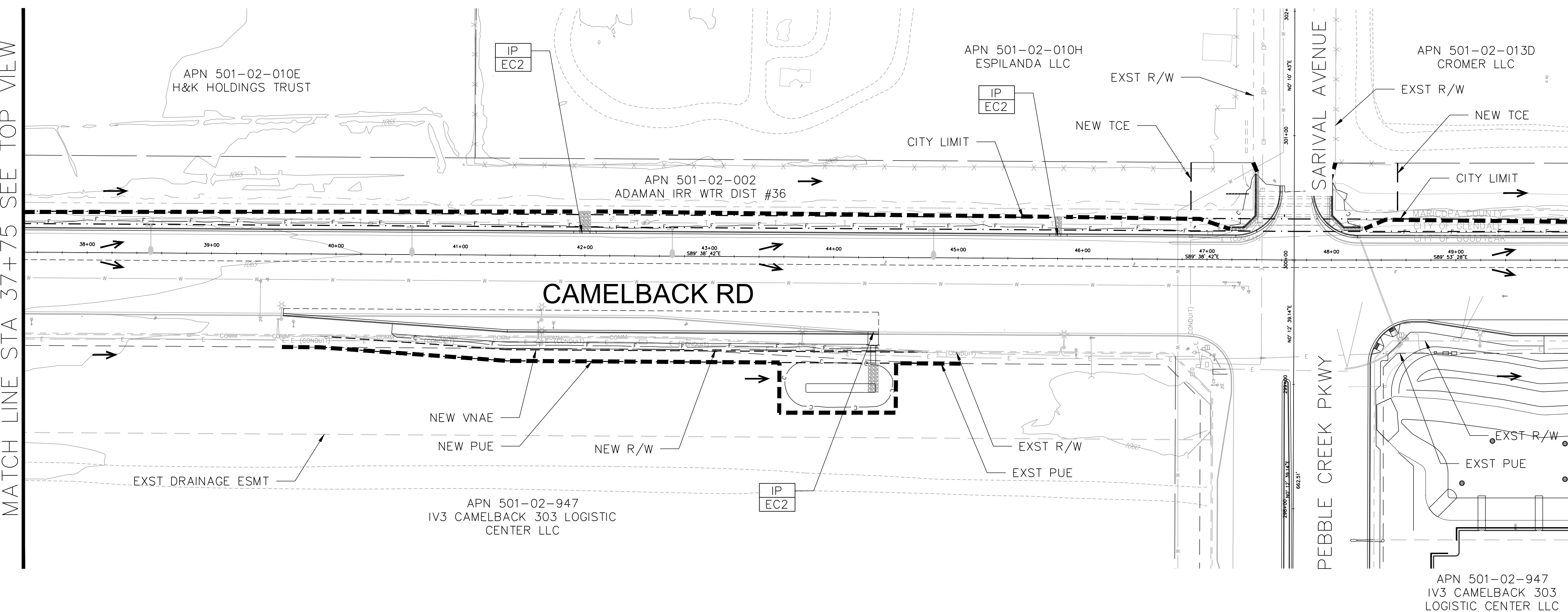
No Symbol	EC1 - Stabilized Construction Entrance/Exit
	EC2 - Inlet/Outlet Protection
	EC3 - Sediment Wattle 9"
	Direction of Flow
	Seed



MATCH LINE STA 37+75 SEE BOTTOM VIEW



MATCH LINE STA 37+75 SEE TOP VIEW



MATCH LINE STA 50+00 SEE SHEET E-02 TOP

CALL TWO WORKING DAYS BEFORE YOU DIG
602-263-1100
 1-800-STAKE-IT
 (OUTSIDE MARICOPA COUNTY)

DATE	REVISION	BY
CITY OF GOODYEAR ENGINEERING DEPARTMENT 195 N. 145TH AVE P.O. BOX 5100 BUILDING D, GOODYEAR AZ 85338		
SHEET TITLE: EROSION CONTROL PLAN SHEET		
PROJECT TITLE: CAMELBACK ROAD SR 303L TO CITY LIMIT		
SCALE: HORIZ. 1"=50'	DESIGNED: BSP	BID NO.:
VERT. N/A	DRAWN: SRD	AS-BUILT
	PROJECT NO.:	CON-22-6297
	SHT:	E-01
	6 OF 11	

PLOT DATE: Feb 25, 2026

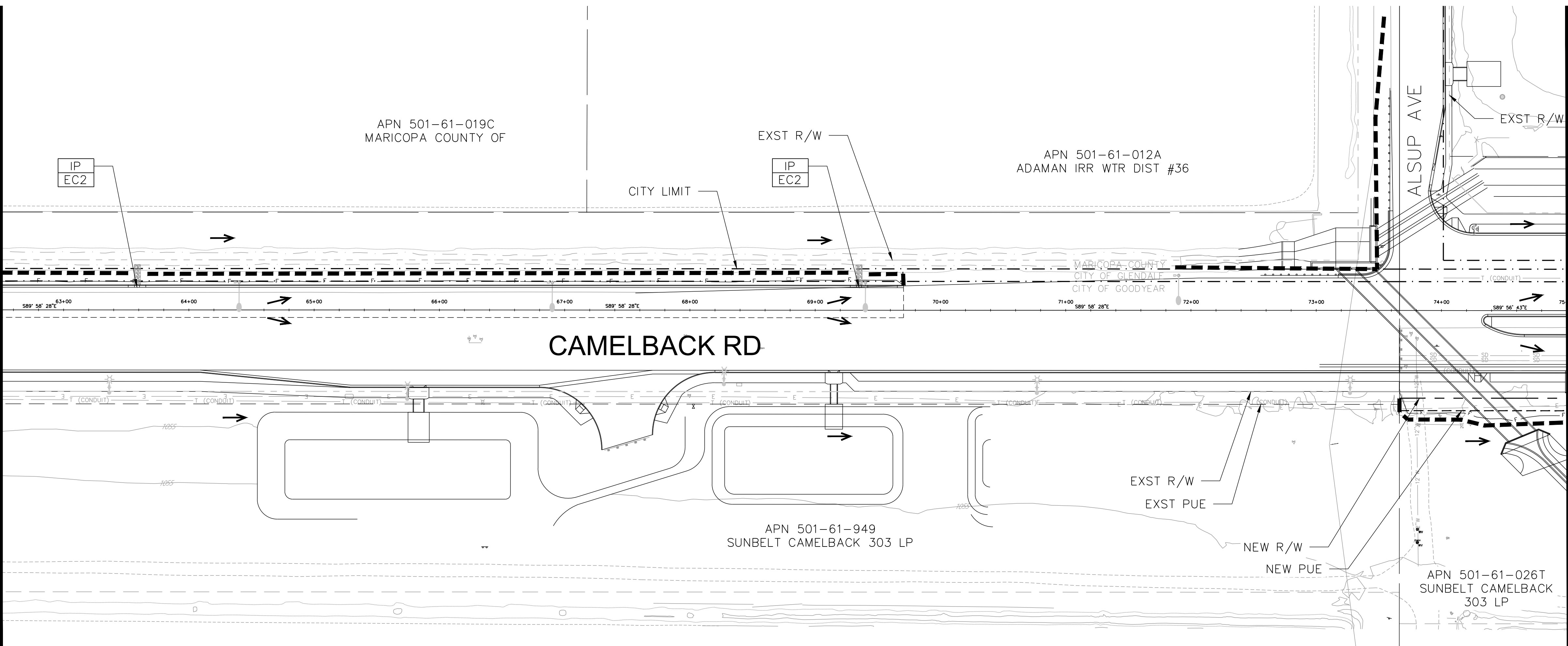
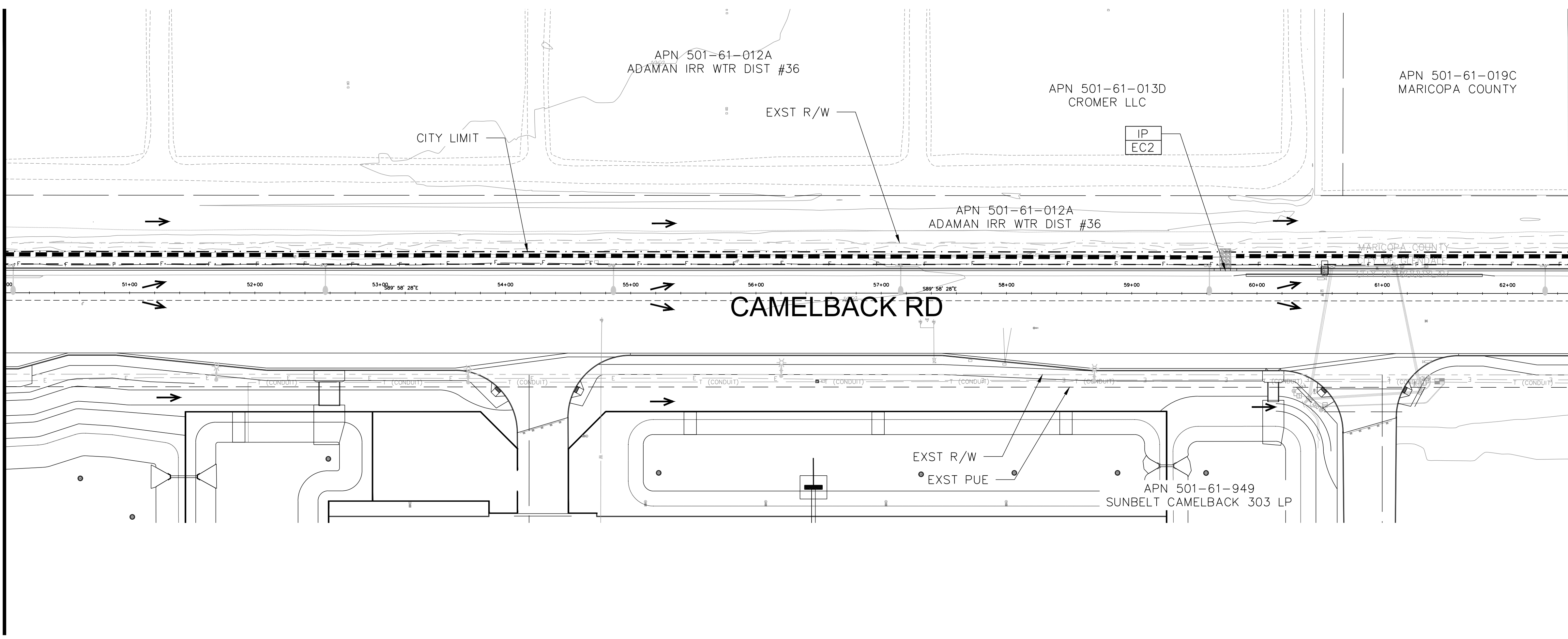
FILE: C:\projects\datasource-1\common\41405172\CBR_42030_ECSP_Sheets_EC01-EC06.dwg

MATCH LINE STA 50+00 SEE SHEET E-01 BOTTOM

MATCH LINE STA 62+50 SEE TOP VIEW

MATCH LINE STA 62+50 SEE BOTTOM VIEW

MATCH LINE STA 75+00 SEE SHEET E-03 TOP



cdg
corral design group, inc.

4432 SOUTH 36TH STREET
PHOENIX, ARIZONA 85040
Tel: 602.222.9822 Fax: 602.222.9079
www.corraldesigngroup.com

EROSION CONTROL LEGEND

- No Symbol EC1 - Stabilized Construction Entrance/Exit
- IP EC2 EC2 - Inlet/Outlet Protection
- EC3 - Sediment Wattle 9"
- Direction of Flow
- Seed

CALL TWO WORKING DAYS BEFORE YOU DIG
602-263-1100
1-800-STAKE-IT
(OUTSIDE MARICOPA COUNTY)

DATE	REVISION	BY
------	----------	----

ENGINEER

EDWARD C. CORRAL
28447
CITY OF GOODYEAR ENGINEERING DEPARTMENT
195 N. 145TH AVE
P.O. BOX 5100
BUILDING D
GOODYEAR AZ 85338

SHEET TITLE: EROSION CONTROL PLAN SHEET

PROJECT TITLE: CAMELBACK ROAD SR 303L TO CITY LIMIT

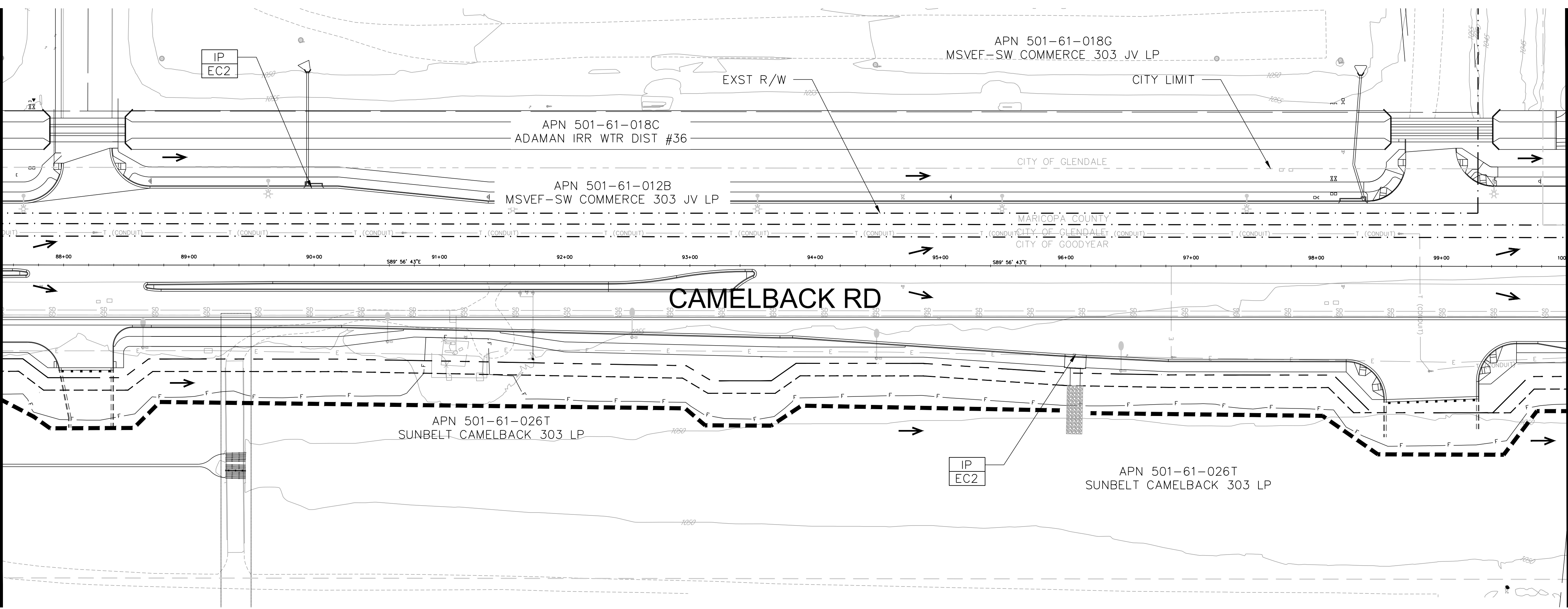
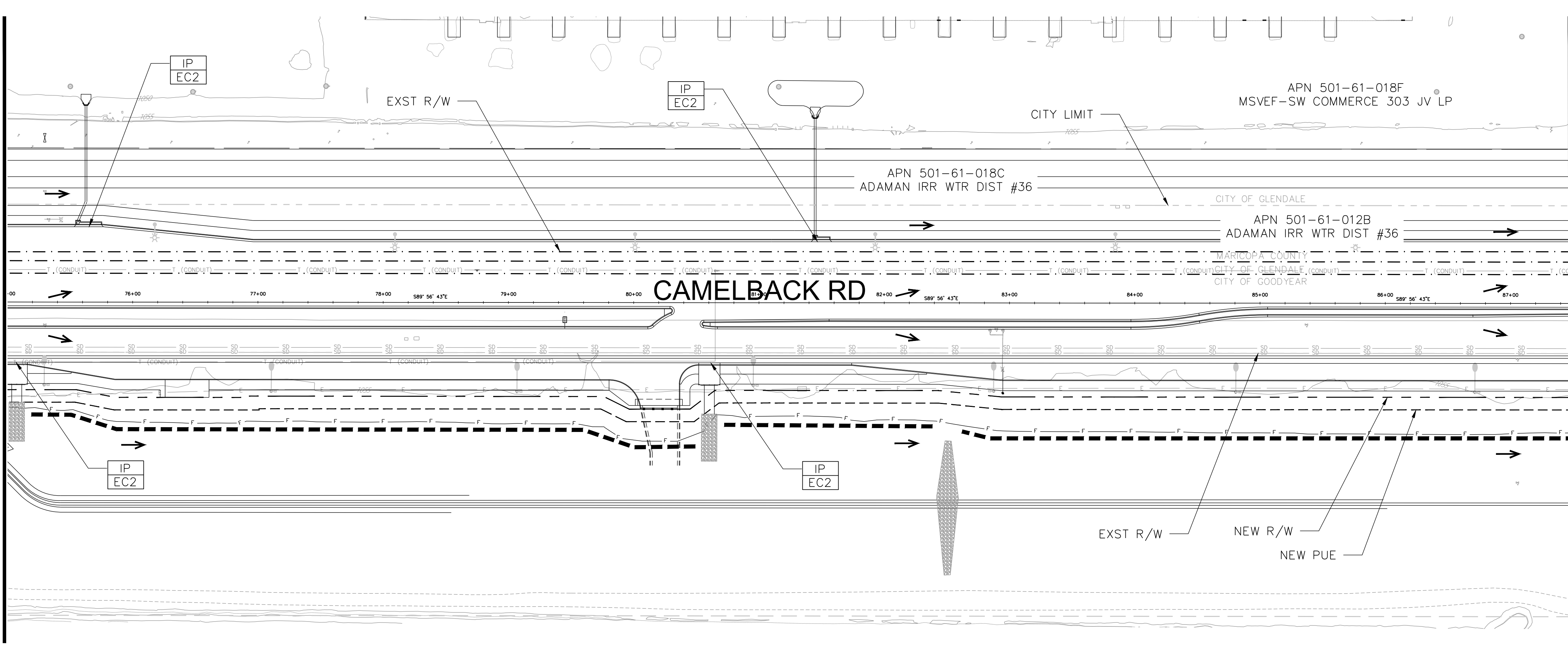
SCALE	DESIGNED	DATE	BID NO.	SHT
HORIZ. 1"=50'	BSP	02/2026		E-02
VERT. N/A	DRAWN	AS-BUILT	PROJECT NO.	
	SRD		CON-22-6297	7 OF 11

PLOT DATE: Feb 25, 2026

FILE: C:\projects\dotsource-1\common\41405172\CBR_42030_ECSP_Sheets_EC01-EC06.dwg

MATCH LINE STA 75+00 SEE SHEET E-02 BOTTOM

MATCH LINE STA 87+25 SEE TOP VIEW



MATCH LINE STA 86+25 SEE BOTTOM VIEW

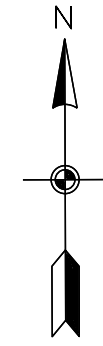
MATCH LINE STA 100+00 SEE SHEET E-04 TOP

cdg
corral design group, inc.

4432 SOUTH 36TH STREET
PHOENIX, ARIZONA 85040
Tel: 602.222.9822 Fax: 602.222.9079
www.corraldesigngroup.com

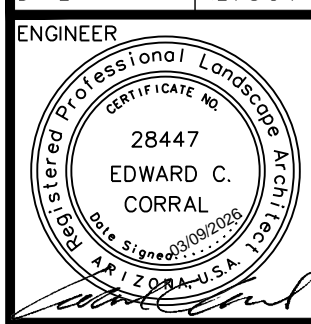
EROSION CONTROL LEGEND

- No Symbol EC1 - Stabilized Construction Entrance/Exit
- IP EC2 EC2 - Inlet/Outlet Protection
- EC3 - Sediment Wattle 9"
- Direction of Flow
- Seed



CALL TWO WORKING DAYS BEFORE YOU DIG
602-263-1100
1-800-STAKE-IT
(OUTSIDE MARICOPA COUNTY)

DATE REVISION BY



Goodyear

CITY OF GOODYEAR
ENGINEERING DEPARTMENT
195 N. 145TH AVE
P.O. BOX 5100
BUILDING D,
GOODYEAR AZ 85338

SHEET TITLE EROSION CONTROL PLAN SHEET

PROJECT TITLE CAMELBACK ROAD SR 303L TO CITY LIMIT

SCALE	DESIGNED	DATE	BID NO.	SHT
HORIZ. 1"=50'	BSP	02/2026		E-03
VERT. N/A	DRAWN	AS-BUILT	PROJECT NO.	
	SRD		CON-22-6297	8 OF 11

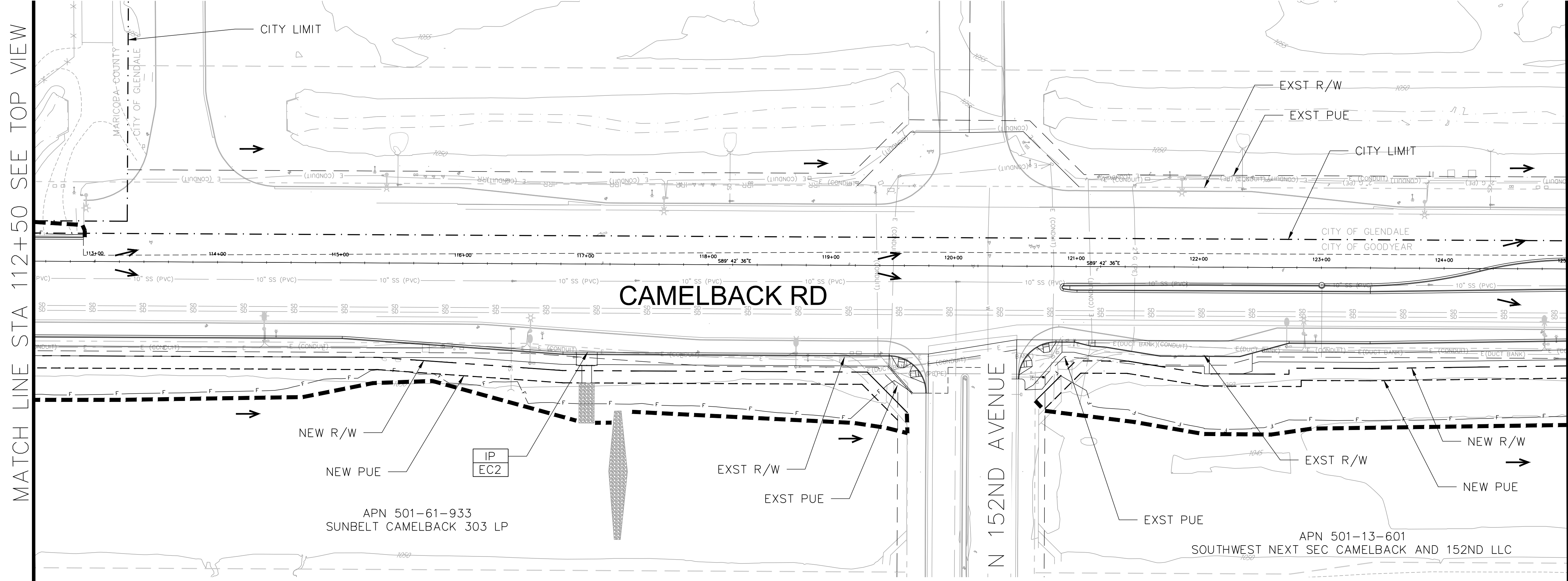
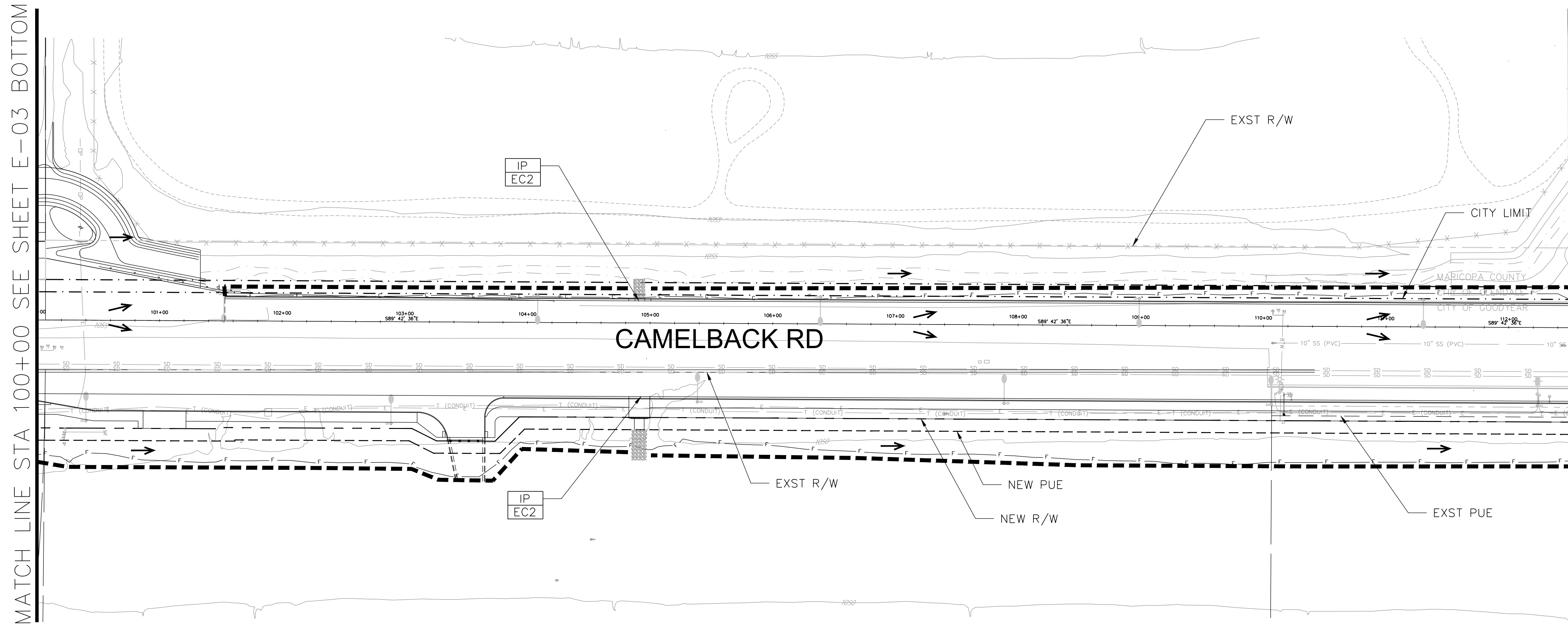
PLOT DATE: Feb 25, 2026

FILE: C:\projects\datasource-1\common\41405172\CBR_42030_ECSP_Sheets_EC01-EO06.dwg

MATCH LINE STA 100+00 SEE SHEET E-03 BOTTOM

MATCH LINE STA 112+50 SEE TOP VIEW

MATCH LINE STA 112+50 SEE BOTTOM VIEW



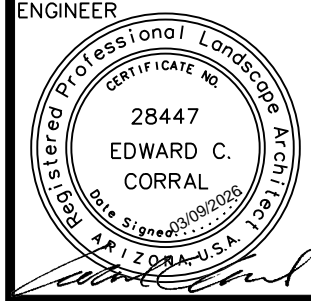
cdg
corral design group, inc.
4432 SOUTH 36TH STREET
PHOENIX, ARIZONA 85040
Tel: 602.222.9822 Fax: 602.222.9079
www.corraldesigngroup.com

EROSION CONTROL LEGEND

- No Symbol EC1 - Stabilized Construction Entrance/Exit
- IP EC2 EC2 - Inlet/Outlet Protection
- EC3 - Sediment Wattle 9"
- Direction of Flow
- Seed

CALL TWO WORKING DAYS BEFORE YOU DIG
602-263-1100
1-800-STAKE-IT
(OUTSIDE MARICOPA COUNTY)

DATE	REVISION	BY
------	----------	----



Goodyear
CITY OF GOODYEAR
ENGINEERING DEPARTMENT
195 N. 145TH AVE
P.O. BOX 5100
BUILDING D
GOODYEAR AZ 85338

SHEET TITLE: EROSION CONTROL PLAN SHEET

PROJECT TITLE: CAMELBACK ROAD SR 303L TO CITY LIMIT

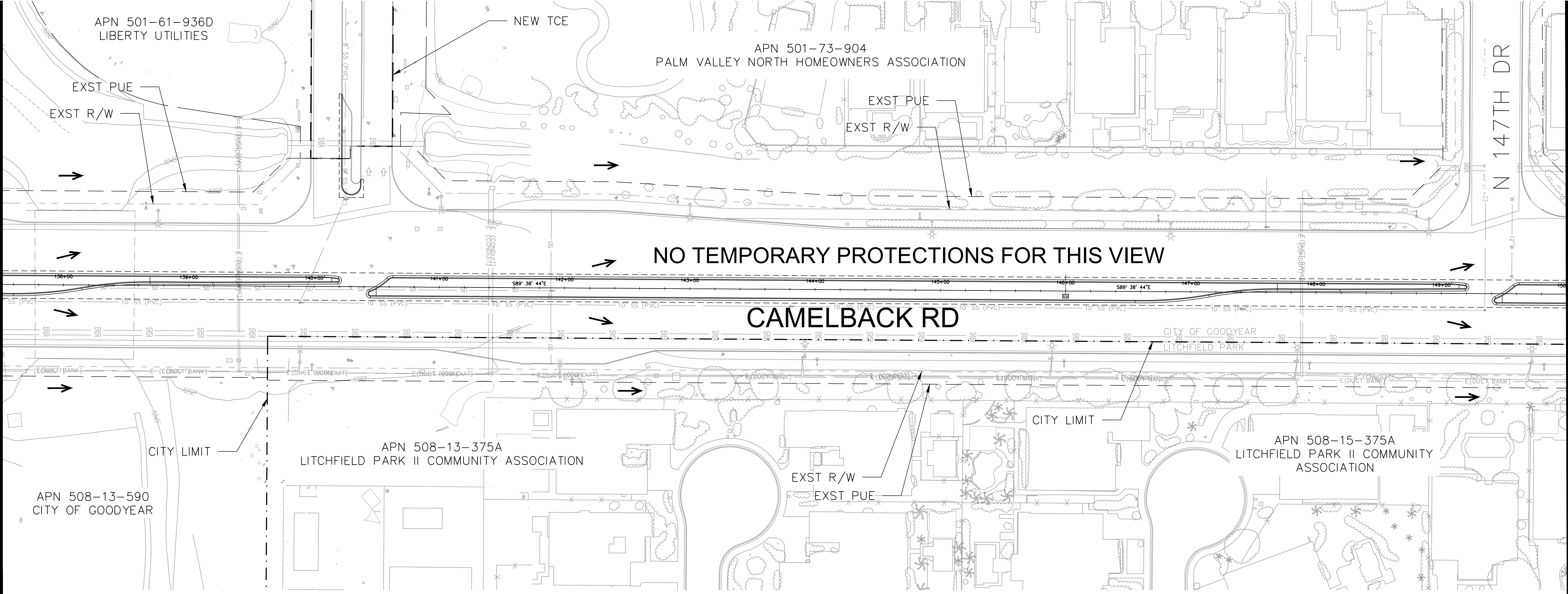
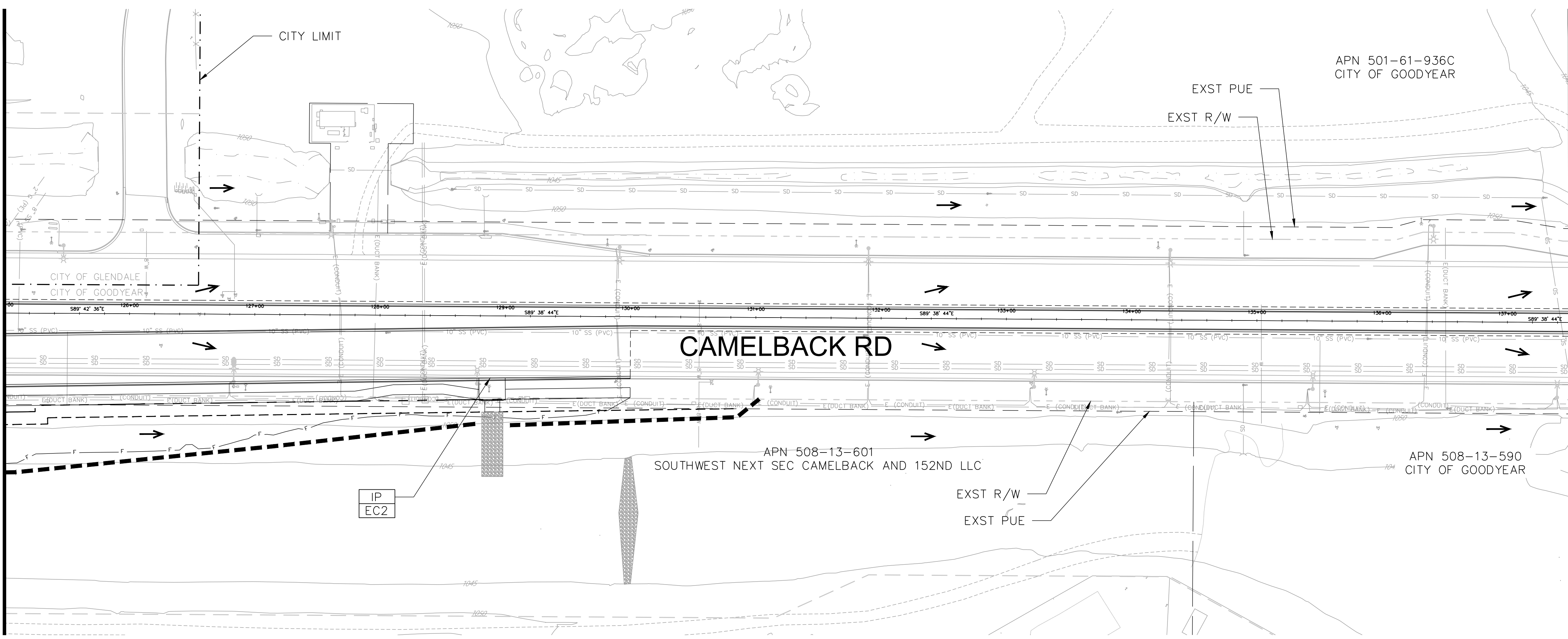
SCALE	DESIGNED	DATE	BID NO.	SHT
HORIZ. 1"=50'	BSP	02/2026		E-04
VERT. N/A	DRAWN	AS-BUILT	PROJECT NO.	9 OF 11
	SRD		CON-22-6297	

PLOT DATE: Feb 25, 2026

FILE: C:\projects\dotasource-1\common\41405172\CBR_42030_ECSP_Sheets_EC01-E006.dwg

MATCH LINE STA 125+00 SEE SHEET E-04 BOTTOM

MATCH LINE STA 137+50 SEE TOP VIEW



MATCH LINE STA 137+50 SEE BOTTOM VIEW

MATCH LINE STA 150+00 SEE SHEET E-06 TOP

cdg
corral design group, inc.

4432 SOUTH 36TH STREET
PHOENIX, ARIZONA 85040
Tel: 602.222.9822 Fax: 602.222.9079
www.corraldesigngroup.com

EROSION CONTROL LEGEND

- No Symbol EC1 - Stabilized Construction Entrance/Exit
- IP EC2 EC2 - Inlet/Outlet Protection
- EC3 - Sediment Wattle 9"
- Direction of Flow
- Seed

CALL TWO WORKING DAYS BEFORE YOU DIG
602-263-1100
1-800-STAKE-IT
(OUTSIDE MARICOPA COUNTY)

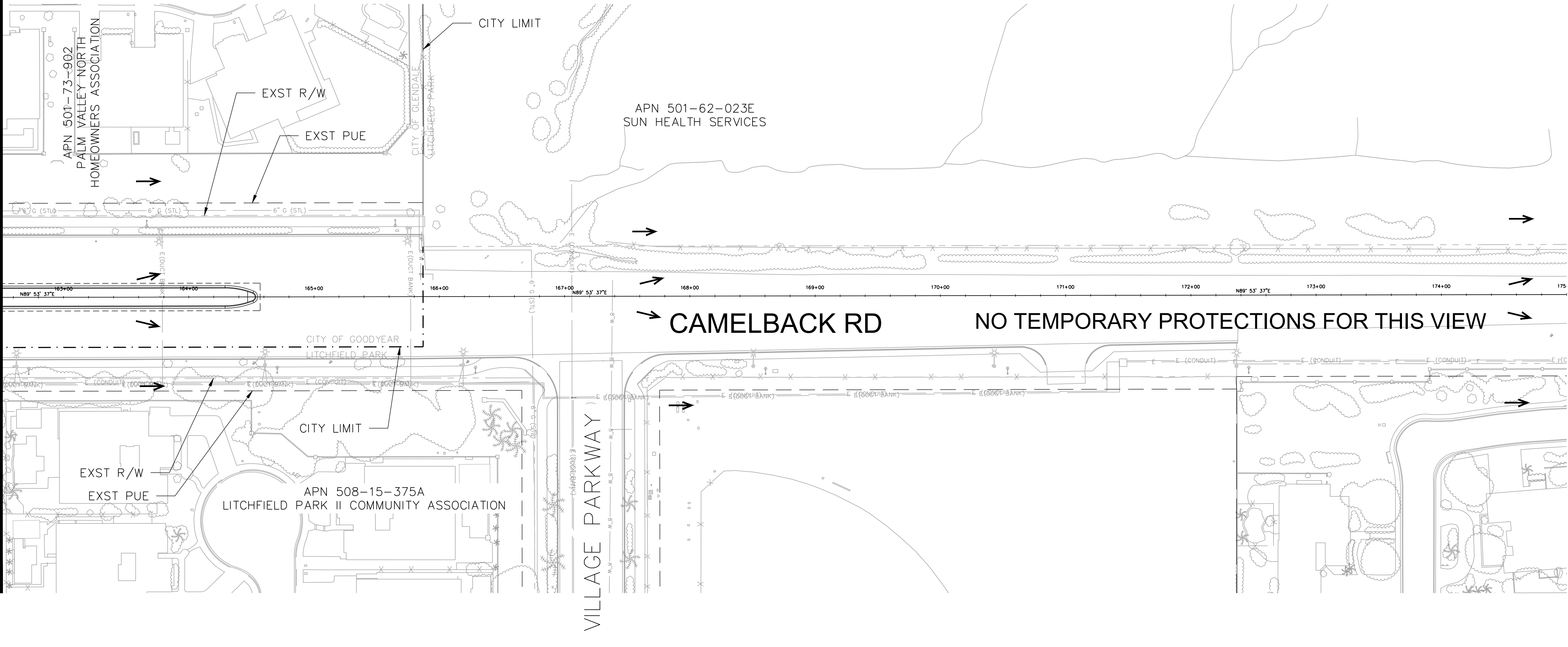
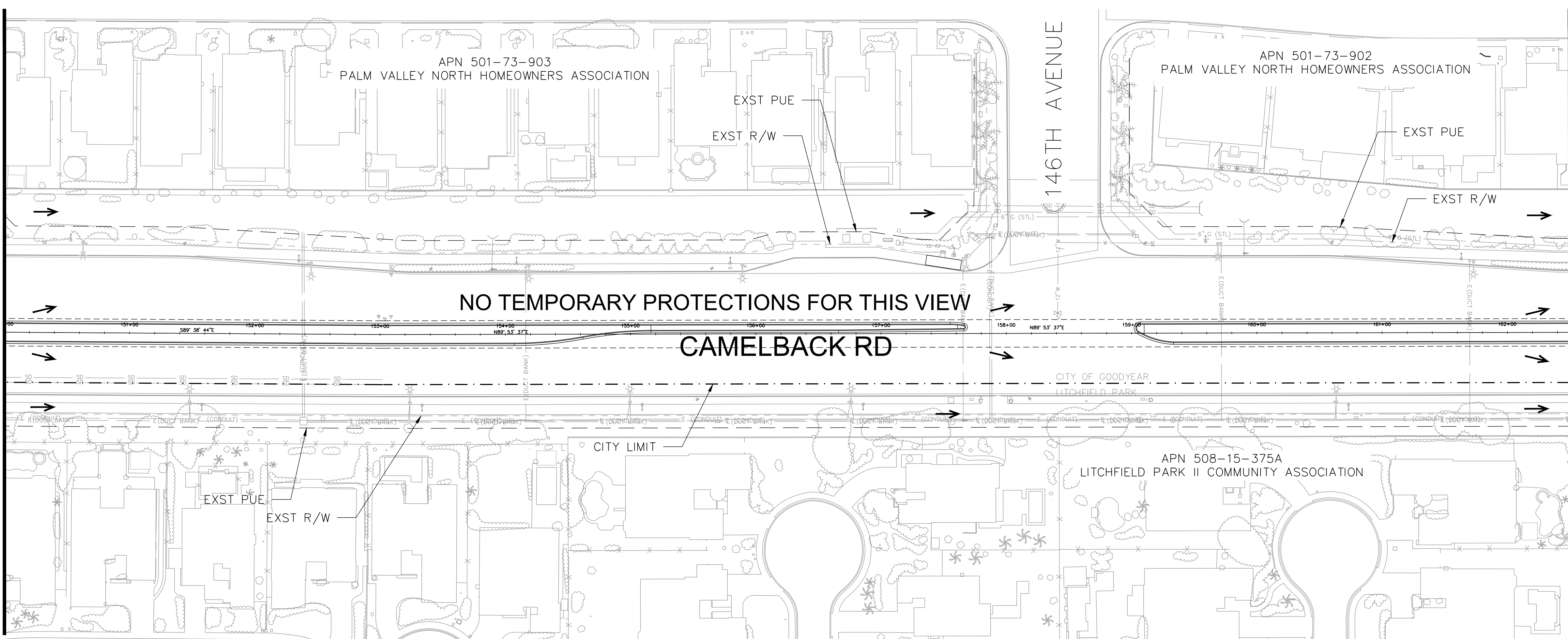
ENGINEER	DATE	REVISION	BY
	<p>CITY OF GOODYEAR ENGINEERING DEPARTMENT 195 N. 145TH AVE P.O. BOX 5100 BUILDING D GOODYEAR AZ 85338</p>		
SHEET TITLE: EROSION CONTROL PLAN SHEET			
PROJECT TITLE: CAMELBACK ROAD SR 303L TO CITY LIMIT			
SCALE	DESIGNED	BID NO.	SHT
HORIZ. 1"=50'	BSP	02/2026	E-05
VERT. N/A	DRAWN	AS-BUILT	PROJECT NO.
	SRD		CON-22-6297
			10 OF 11

PLOT DATE: Feb 25, 2026

FILE: C:\projects\dotasource-1\common\405172\CBR_42030_ECSP_Sheets_EC01-EO06.dwg

MATCH LINE STA 150+00 SEE SHEET E-05 BOTTOM

MATCH LINE STA 126+25 SEE TOP VIEW



cdg
corral design group, inc.

4432 SOUTH 36TH STREET
PHOENIX, ARIZONA 85040
Tel: 602.222.9822 Fax: 602.222.9079
www.corraldesigngroup.com

EROSION CONTROL LEGEND

- No Symbol EC1 - Stabilized Construction Entrance/Exit
- IP EC2 - Inlet/Outlet Protection
- EC3 - Sediment Wattle 9"
- Direction of Flow
- Seed

CALL TWO WORKING DAYS BEFORE YOU DIG
602-263-1100
1-800-STAKE-IT
(OUTSIDE MARICOPA COUNTY)

DATE	REVISION	BY
ENGINEER		
CITY OF GOODYEAR ENGINEERING DEPARTMENT 195 N. 145TH AVE. P.O. BOX 5100 BUILDING D, GOODYEAR AZ 85338		
SHEET TITLE: EROSION CONTROL PLAN SHEET		
PROJECT TITLE: CAMELBACK ROAD SR 303L TO CITY LIMIT		
SCALE	DESIGNED	BID NO.
HORIZ. 1"=50'	BSP	02/2026
VERT. N/A	DRAWN	AS-BUILT
	SRD	CON-22-6297
		PROJECT NO.
		11 OF 11